



H.264 Camera Client User Manual



CONTENTS

1 WELCOME.....	3
1.1 Features	3
1.2 Installation Requirements	3
1.3 Software Installation	3
2 The software operation.....	5
2.1 Login and Exit the client.....	5
2.2 The software UI	6
2.2.1 The system buttons column	7
2.2.2 The labels column	7
2.2.3 Camera List	7
2.2.4 Real-time preview.....	8
2.2.5 The device information list	11
2.2.6 PTZ.....	12
2.2.7 Preset	13
2.2.8 Color	14
3 Configure the client.....	14
3.1 Device Management	14
3.2 Group Management	18
3.2.1 Add Group.....	18
3.2.2 Configure Group	18
3.3 Preview.....	19
3.3.1 Non-cyclical preview	20
3.3.2 Group switch	23
3.4 Parameter settings	24
3.4.1 Color	25
3.4.2 Video	26
3.4.3 Audio	27
3.4.4 OSD.....	27
3.4.5 Network.....	28
3.4.6 MD	28
3.4.7 Alarm in	30
3.4.8 PTZ.....	30
3.4.9 System	31
3.5 Record Management.....	32
3.6 Linkage alarm.....	34
3.7 User management	35
3.8 Other settings	37
4 Other settings about the client	37
4.1 Playback.....	37
4.2 EMap	41
4.2.1 Add the map	41
4.2.2 Edit the map	42
4.3 Logs	43
4.4 Logout user.....	44

4.5 Exit	44
5 OBTAINING TECHNICAL SUPPORT	44

1 WELCOME

The Camera client can monitor many cameras at the same time. It is easy to use and has powerful function.

1.1 Features

- ◆ The client can monitor 16 cameras at one page
- ◆ Supports Playback
- ◆ Supports Preset, you can set 256 presets
- ◆ Supports PTZ
- ◆ Supports Group Switch
- ◆ Supports five alarm types: Motion Detection, Input Alarm, Lost Connect, Hard Disk Full, Hard Disk Error
- ◆ The Linkage Alarm has four types: Popup View Window, Electron Map Alarm, Linkage Record and Sound Alarm
- ◆ Supports Logs Management
- ◆ Multi-level users management with password protection

1.2 Installation Requirements

PC: Pentium IV or above

CPU: 2.0G or above

Memory size: 2.0G or above

Hard disk: 120G or above

Display screen: 1024x768 or higher resolution

OS: Windows 2000/ Windows XP/ Windows 2003/ Windows Vista/ Windows 7

Suggested OS: Windows XP

1.3 Software Installation

(1) Insert the CD in the CD drive of your computer. Open the CD; find the software per instructions;

(2) Double click H.264 Camera Client.exe and install the software.

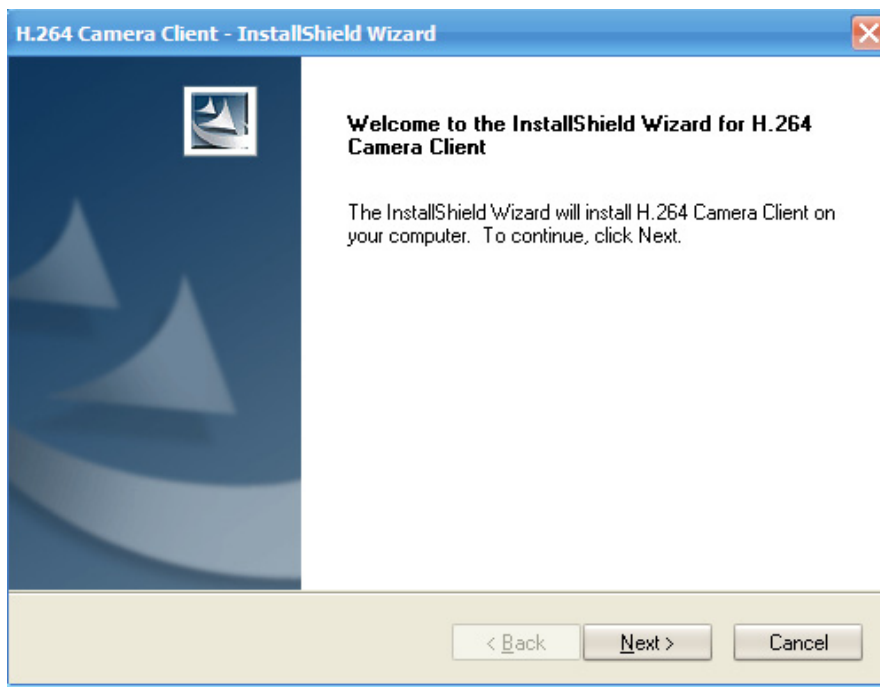


Figure 1.1

(3) Click Next.

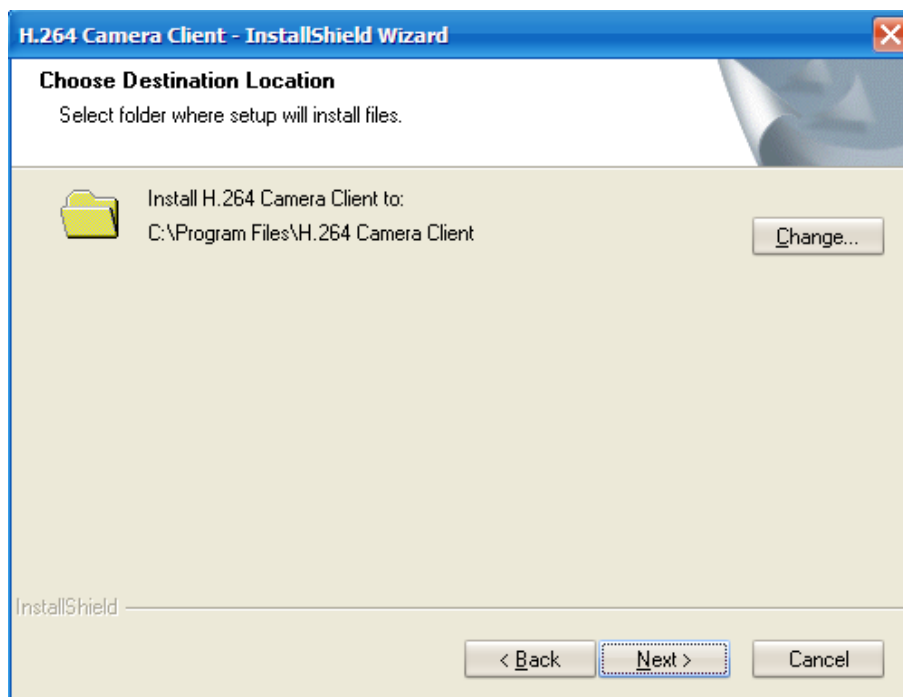


Figure 1.2

(4) Choose the destination location and then click Next.

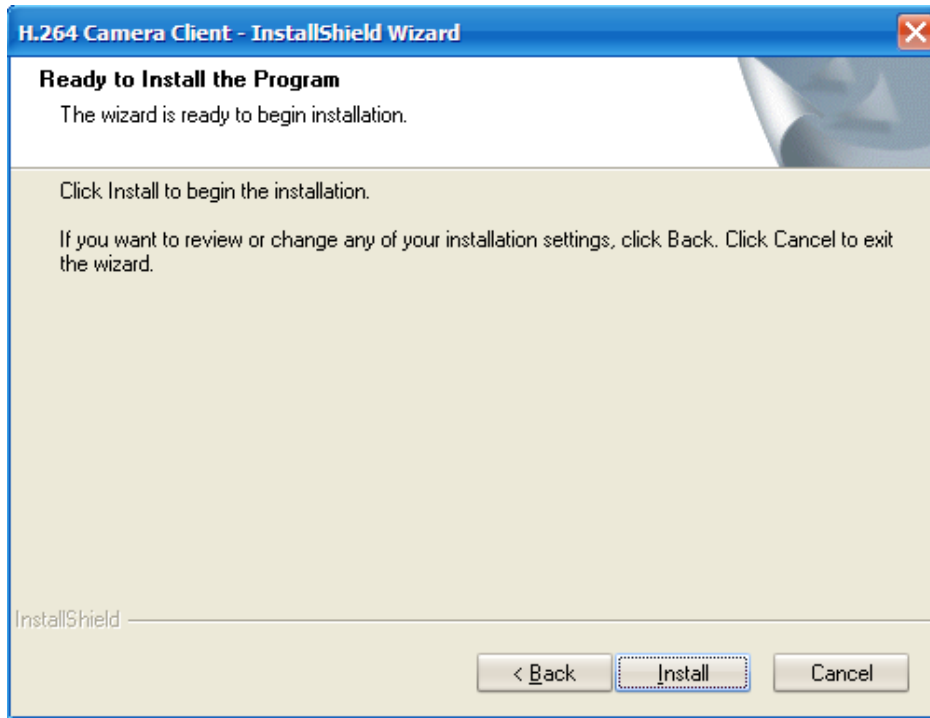



Figure 1.3

(5) Click Install to complete the software installation. An icon  appears on the desktop automatically.

At the start program of PC, you can see the icon too.

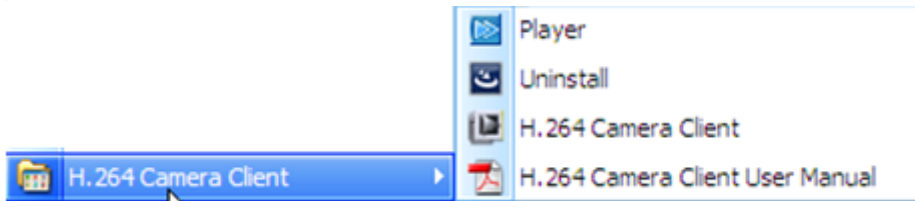
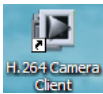


Figure 1.4

2 The software operation

2.1 Login and Exit the client

Double click , you will see the login UI.

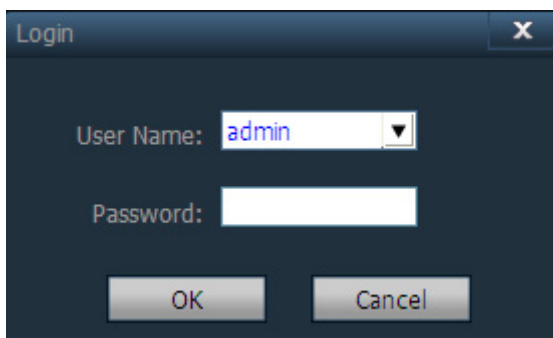


Figure 2.1

Login: The default user name is admin, no password. Click OK directly and you can see the following screen (Figure2.2).

Exit: When you exit the software, you should enter the user name and password, or else you can't exit the software.

Note: The client supports three-level permissions: admin, user and guest. Only the admin user can exit the client, other users can't exit it. Please reset the user name and password at first using(for more details: see 3.7 chapter).

2.2 The software UI

Login the client and you can see the following screen:

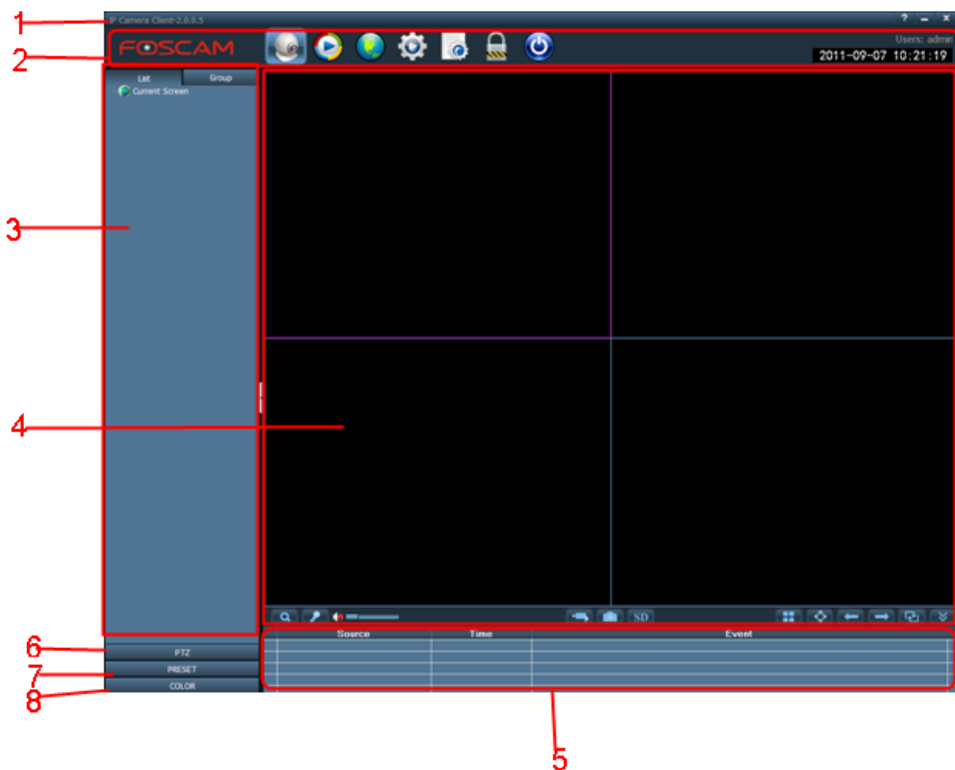


Figure 2.2

1—the system buttons column 2—the labels column 3—Camera List

4---Real-time preview
6—PTZ

7—Preset

5—the device information list
8—Color

2.2.1 The system buttons column



When you experience some issues and you want to see the user manual, click here.



Hide the client



Exit the client

2.2.2 The labels column



The LOGO of the software



Click it and back to the preview screen



Click it and back to the playback screen



Click it and back to the Emap screen



Click it and back to Configure screen



Click it and back to the LOGS screen



Log off and switch users



Exit the client



2.2.3 Camera List

If you have added cameras to the client (read 3.1 chapter about how to add cameras to the client), you can see the following screen:



Figure 2.3

There are two modes: List and Group.

List: You can see all cameras that have added to the client and which area they belong to. Such as the picture above, 192.168.1.132:2012 belongs to “a” area. Click  before the device IP, you can see the device channel. And the tag changes to .

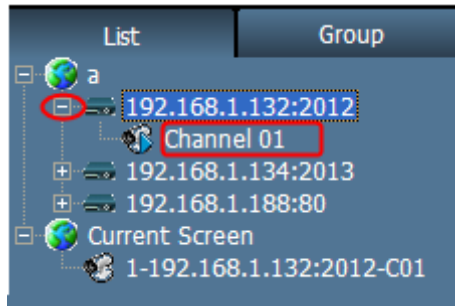


Figure 2.4

You can see a icon before the Channel. The icon has three statuses:



: This status shows that the device has connected successfully,



This status shows that the device has connected connect failed.



This status shows that the camera is alarming. Make sure you have set Alarm.

Current Screen: Displays the current connected devices, only under the list mode.

Group: Display the group information Make sure you have configured the Group (read 3.2 chapter about how to configure Group).

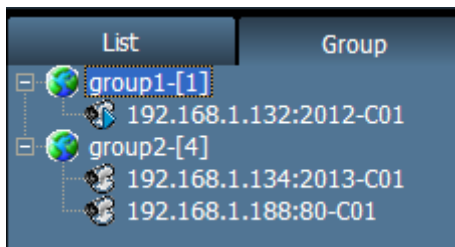



Figure 2.5

2.2.4 Real-time preview

Add cameras to the client and back to the device list, double click the device channel then you can monitor the camera, such as the picture below:



Figure 2.6

 Magnifier. Click this button then drag the left button of the mouse on the view, the area can be amplified. Click this button again, stop the function.


 Select one connected video by clicking on the view. Click the button and you can see the icon at the connected video. Then talk to the camera by the microphone that connected with PC. People around the camera can hear your voice (the camera must have some audio output device such as the speakers). Click the icon again, people can't hear your voice and the icon disappeared.



Figure 2.7

Note: You can only talk to one camera at the same time.

 Select one connected video, click the icon and you can hear the sound around

cameras. Make sure you have opened the audio and adjusted the volume. You can monitor many videos at the same time.



Select one connected video, click this icon and start recording. You can see a red icon at the video. Click it again, the camera will stop recording and the icon will disappear.



Figure 2.8



Select one connected video, click the icon and the client will capture the living picture automatically. If you click the capture button many times at a short time, the client can capture a maximum of 2 pictures at one second. Please set the storage path at “ Config-Other Settings”.



Select one connected video, click the icon and you can see the files that stored at the SD card.

Note: The camera must have inserted SD card.



The client can monitor many cameras at one page, click the icon and choose the display number. For example, click four pic, you can see the following picture.



Figure 2.9



Click the icon, the client will be full-screen. Click ECS and exit the full-screen.



Click last page to preview the videos of last page.



Click next page to preview the videos of next page.

NOTE: Make sure you must have set groups for the client and click start group switch before clicking last/next page.



If you have set group, click this icon, you can see the page shown one by one. Click the icon again and stop group switch. (read 3.2 chapter about how to configure Group)



Click it and the camera list will be contracted or extended.



Click it and the device information list will be contracted or extended.

2.2.5 The device information list

Some information about the cameras, such as the alarm information, the connect information and so on.

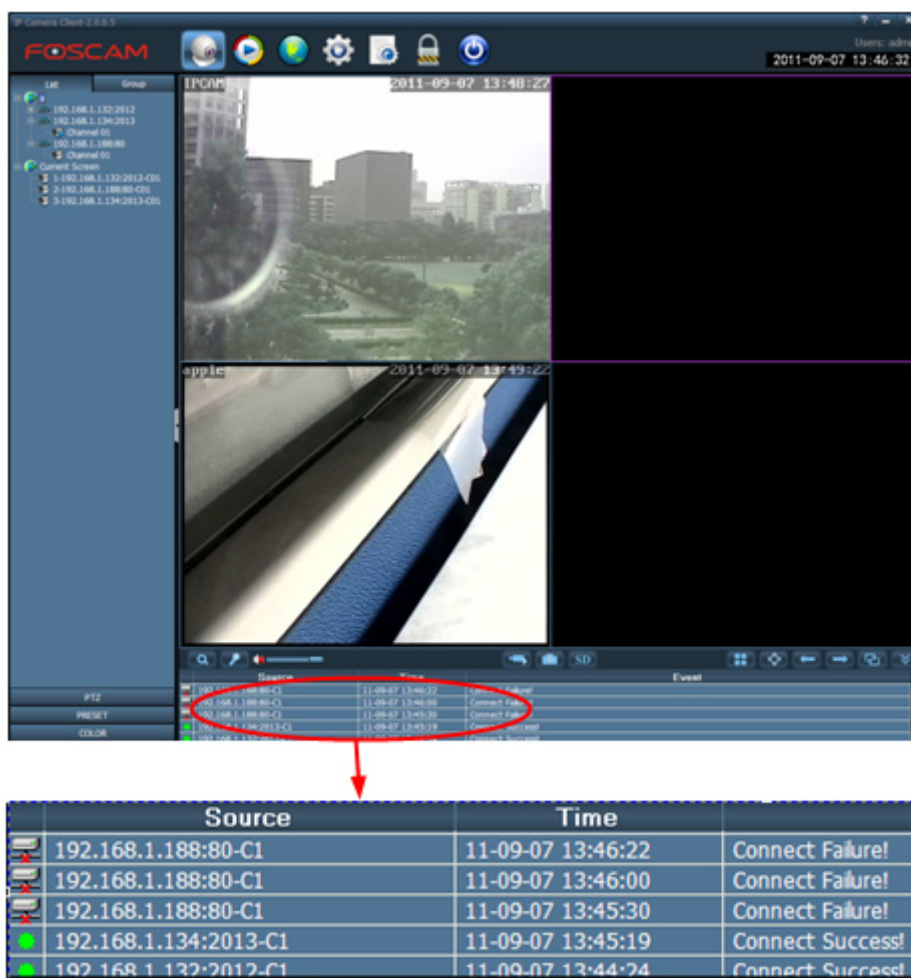


Figure 2.10

2.2.6 PTZ

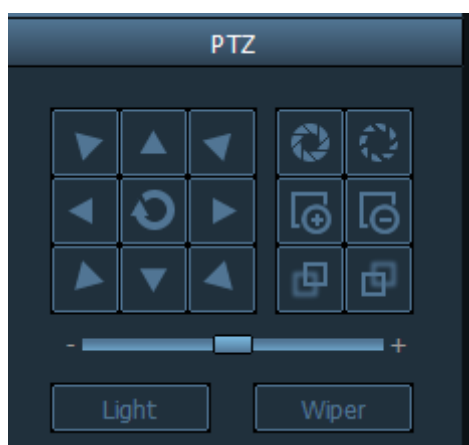


Figure 2.11



Select one connected video, through the cradle head, the camera will rotate at eight directions. Make sure the camera has connected with cradle head.



Drag the slide bar to the left, the camera will rotate slower, and drag it to the right, it will rotate faster.



Enlarge the aperture. The lens must support the function.



Shrink the aperture. Firstly the lens must support the function



Zoom in. Firstly make sure the lens support the function.



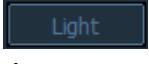
Zoom out. Firstly make sure the lens support the function.



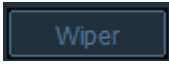
Focus in. Make sure the lens support the function.



Focus out. Make sure the lens support the function.



Click the icon, turn on the light on camera. Click it again, turn off the light. Make sure the camera supports the function.



Click the icon, turn on the wiper. Click again, close the function. Make sure the camera supports the function.

2.2.7 Preset

The client supports 256 preset points at most, but how many presets you can set is decided by the camera you select.

PRESET	
NO.	PresetName
001	Preset001
002	Preset002
003	Preset003
004	Preset004
005	Preset005
006	Preset006
007	Preset007
008	Preset008
009	Preset009
010	Preset010

Goto Set Del

Figure 2.12

Select one connected camera, once you have determined the viewing location, click the button "set". This location can be retrieved by selecting the number assigned and clicking the "goto"

button. Select one preset number and click Del, you can delete the preset.

2.2.8 Color

Brightness, contrast, hue and saturation are used to adjust the quality of the video.

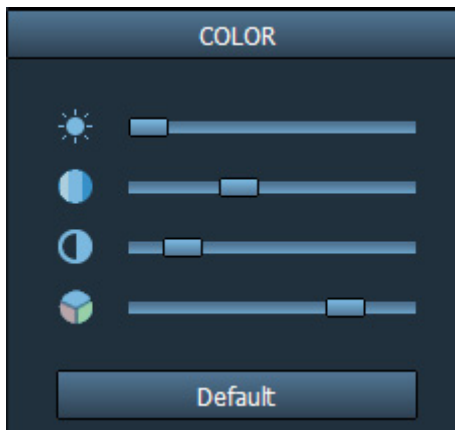



Figure 2.13

Select one connected camera and adjust the parameters, Click default and the camera will restore the factory default.

3 Configure the client

3.1 Device Management

Before using the software, you need configure and add devices to the client. Click the icon  and come to the device management UI.

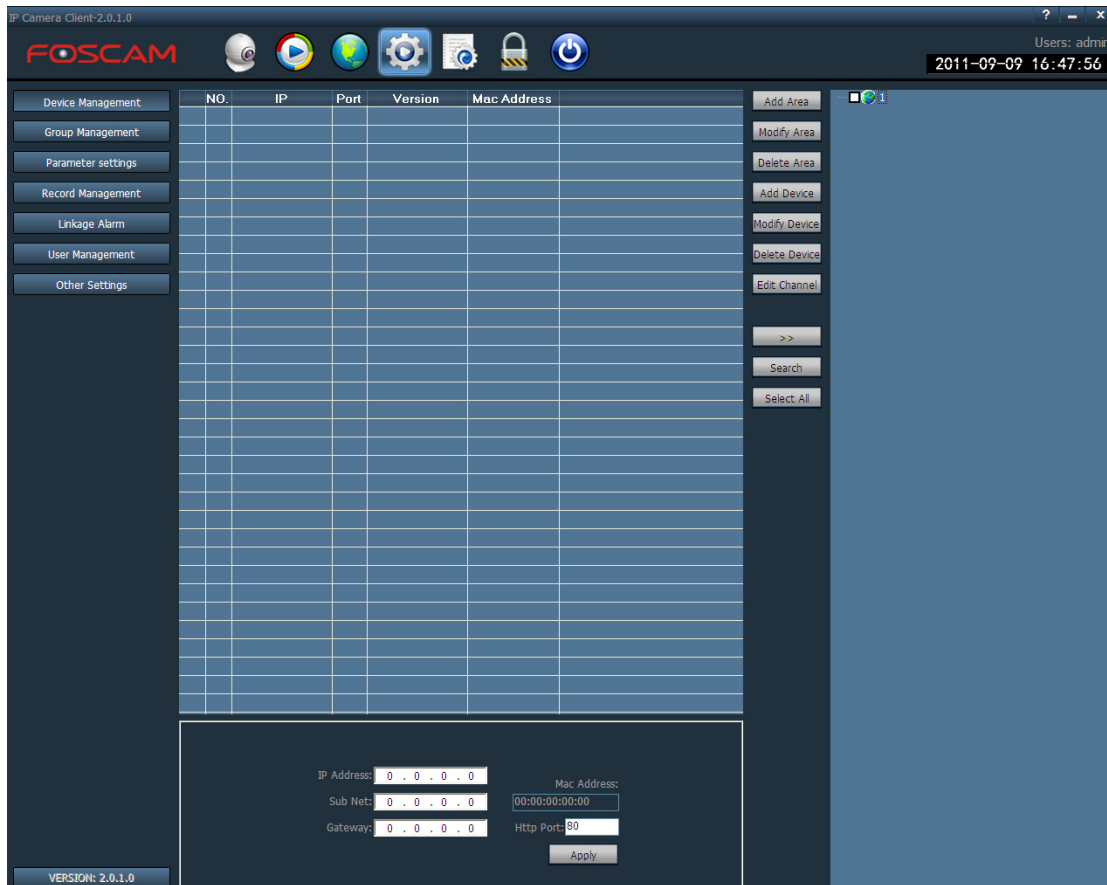


Figure 3.1

The default device list is null, you need add the Area first and then add cameras to the Area. Click Add Area, you will see a dialog box. Enter the area name and click OK.

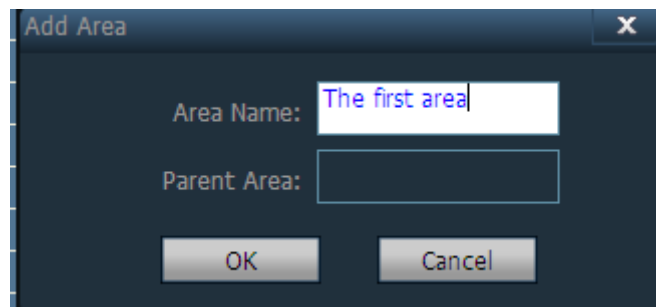


Figure 3.2

The first area does not have the parent area. You can add 128 areas at most.

- Add Area** : Add area to the device list.
- Modify Area** Select one existent area and then modify the area name.
- Delete Area** Select one existent area and then delete it. The deleted area cannot contain any cameras, or else you cannot delete it.
- Add Device** Add one camera to a area manually. Click it and you will see the following screen.

Fill in the information about the added camera. Click OK and you can see it under the corresponding area. Such as the following example:

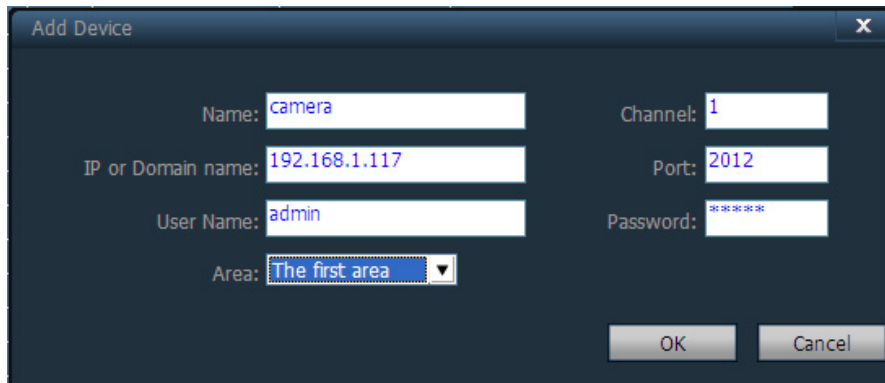


Figure 3.3

Name: The alias of the added camera. After you have added the camera then back to the preview window, you can only see the name but not the device IP.

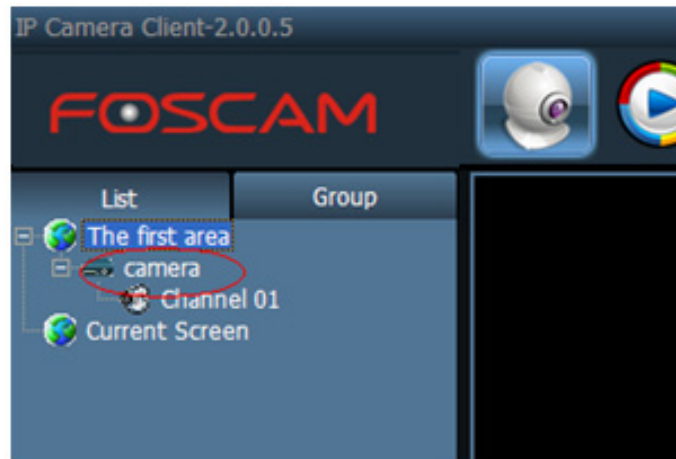


Figure 3.4

Channel: If the camera has many channels, you can choose one. But the current cameras only have one channel. You had better not change it.

Port: The HTTP port of the camera.

User name: The login username of the camera. The default username is admin.

Password: The login password of the camera. The default password is admin.

Area: The display area of the camera.

Fill in the above information, click OK and you can see the camera has been added to the area you set.

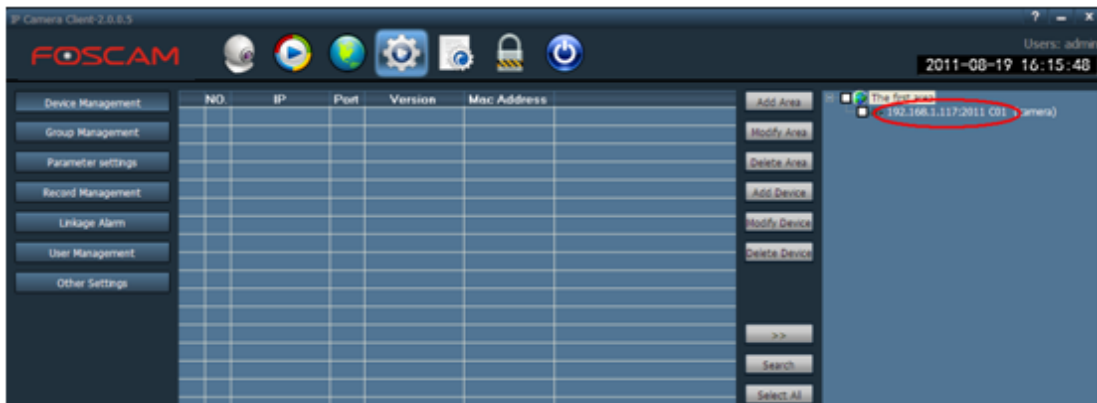


Figure 3.5

Modify Device Modify the information about the added cameras. First you should select it and then click Modify Device.

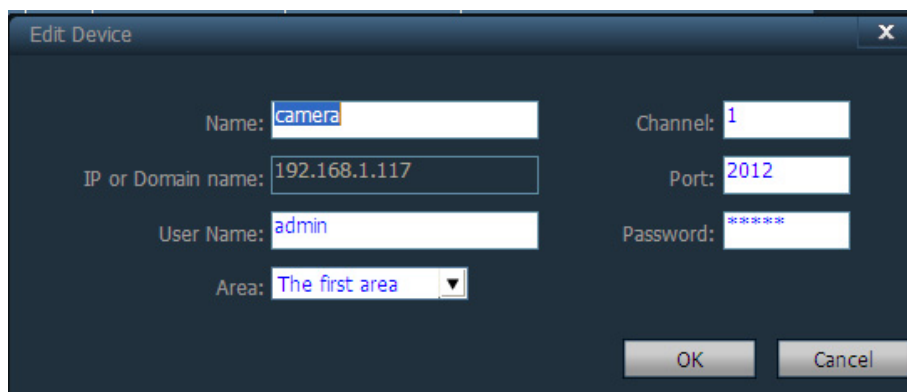


Figure 3.6

Delete Device Select one added camera and then click delete, the camera will be deleted from the corresponding area.
Note: You should disconnect the camera before delete it from the area, or else you cannot delete it successfully.

>> After you searched some cameras, select one area, and choose the cameras then click the icon, the camera can be added to the area.

Search Click the icon, the software will search cameras in LAN automatically.

Select All Select all searched cameras.

3.2 Group Management

3.2.1 Add Group

Add Group Click the icon and it will pop up a dialog box, enter the group name. Choose the split number for one group, you can choose any one: One Pic /Four Pic/Six Pic/Eight Pic/Nine Pic/Sixteen Pic.
You can add twenty groups at most.

Edit Group: Select one group and then click this icon. You will see the following screen:

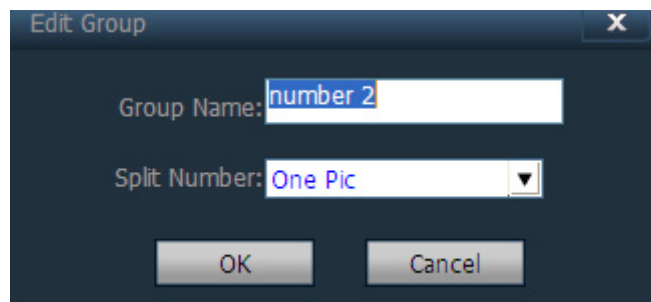


Figure 3.7

Alter the group name and split number, after you click OK, the group will be clear and you need configure the group again.

Delete Group Select one group, click the icon and delete it.

3.2.2 Configure Group

Select one group, click the **+** before the device IP or camera name, and then choose channel 1.

Finally click **>>** and add the channel to the group.

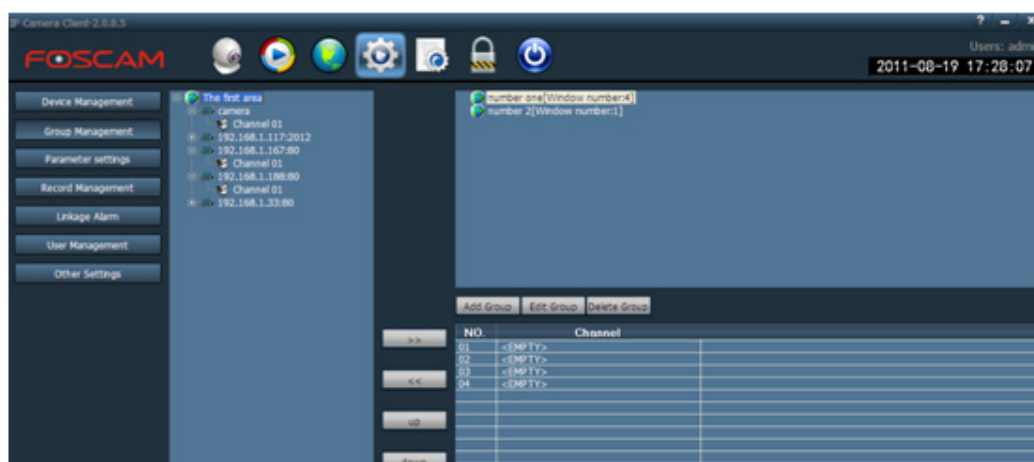


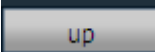
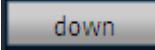



Figure 3.8

-  Add the camera channel to one group.
-  Remove one camera channel form one group
-  Adjust the display order of the camera in one group. The selected device will change position with fore device.
-  Adjust the display order of the camera in one group. The selected device will change position with latter device.

3.3 Preview

Click the icon , you will back to the view window. The default display mode of the client is the camera list mode. Click the “list” or “group” and you can exchange the list or group information. The default display Pic is four. The biggest Pic is sixteen.

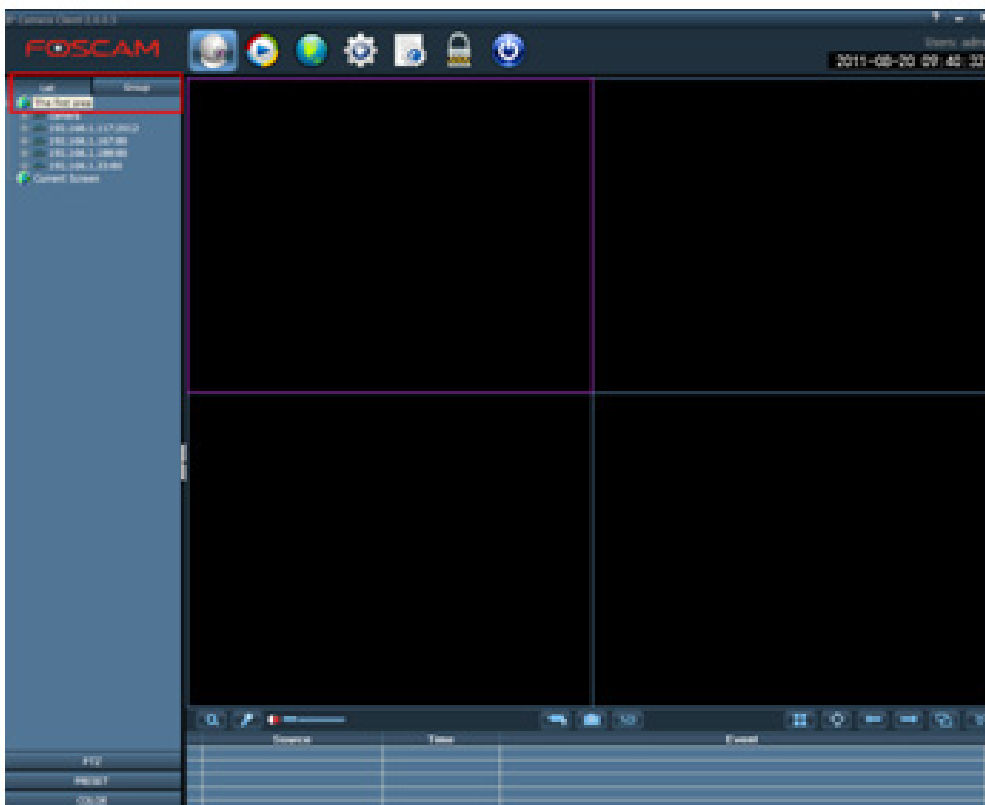


Figure 3.9

3.3.1 Non-cyclical preview

Click the “+” before the device IP or double click the IP address, you can see the channel of the device.

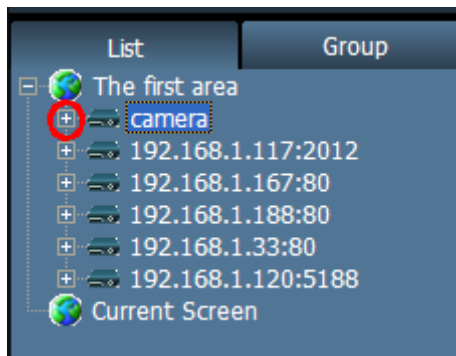


Figure 3.10



Figure 3.11

Double click the channel or drag it to the view window, the camera can be previewed.

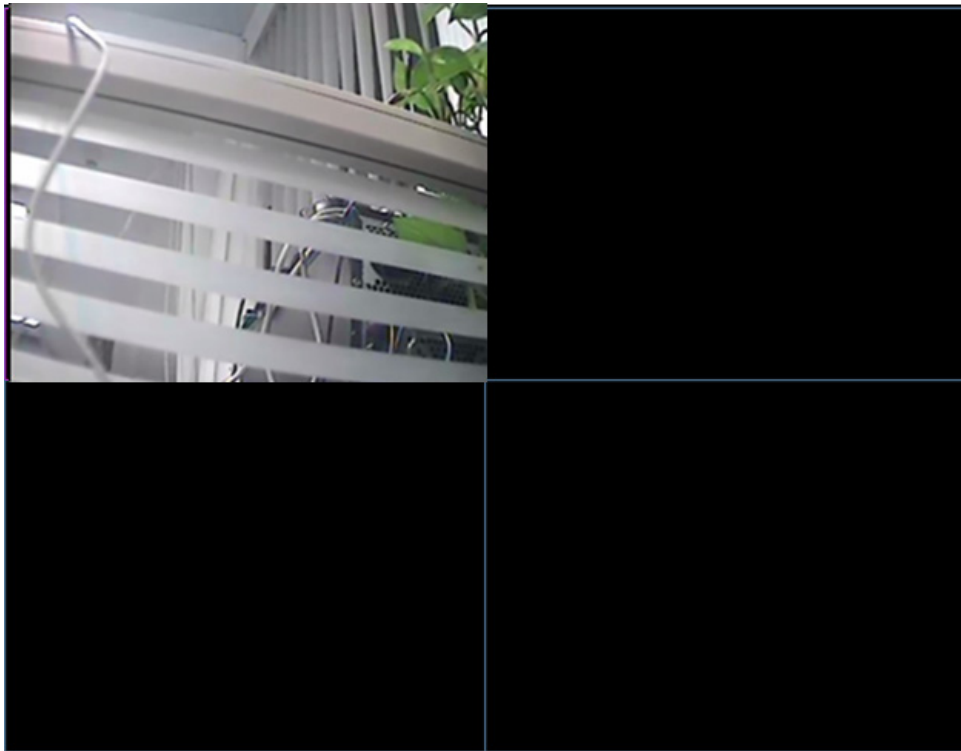





Figure 3.12

If the device has connected successfully, you can see the icon  before the channel. If you see this icon  that shows the device connect failed. This icon  shows the camera is alarming.

You can see the information about the camera connection under the alarm information list.


	Source	Time	
	192.168.1.117:2012-C1	11-08-20 09:59:08	Connect Success!

Figure 3.13

Right click on the area name, you can see a menu.

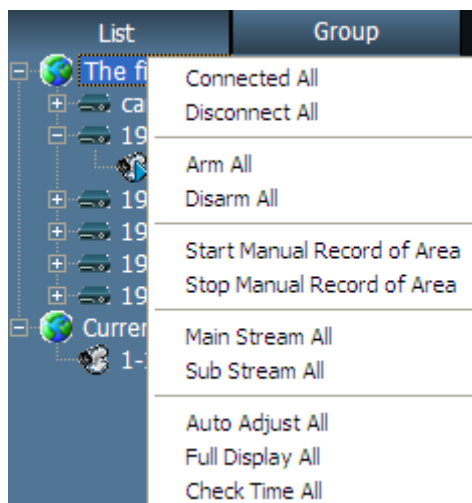


Figure 3.14

Connected all: Connect all devices of the area.
Disconnect all: Disconnect all devices of the area.
Arm all: All devices of the area will alarm when they are detected.
Diarm all: All devices of the area will not alarm even they are detected.
Start manual record of area: All devices of the area will record at the same time. Select the option, you can see the record icon at each view of the area. The default storage path is D disk.
Stop manual record of area: Stop recording of the area.
Main stream all: All devices of the area will start main/first stream.
Sub stream all: All devices of the area will start sub/second stream. If the camera has connected with the main stream, you should disconnect it first and then start the sub stream, or else the camera will use main stream continue.
Auto adjust all: All devices of the selected area will adjust the display proportion automatically.
Full display all: All devices of the selected area will display the view base on the split screen size.
Check time all: The time of All devices at the selected area will sync with PC.
Right click on the IP address, you will see the following screen:

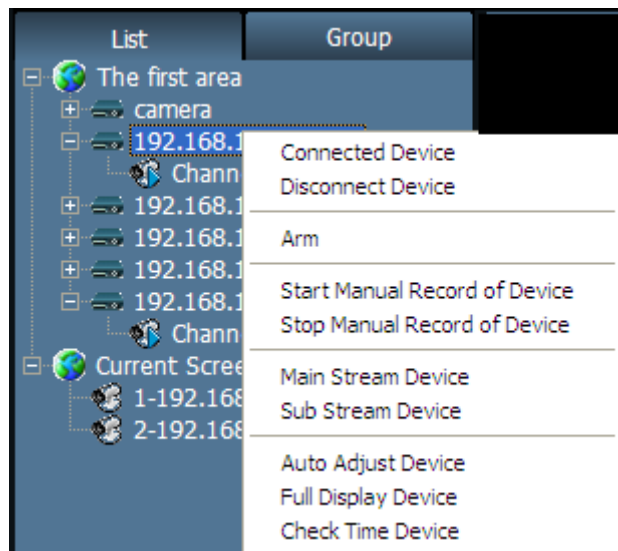


Figure 3.15

Connected device: The channel of the device will be connected.
Disconnect device: The channel of the device will be disconnected.
Arm: The camera will arm when it is detected.
Start/stop manual record of device: The selected device will start or stop recording manually.
Main/sub stream device: The camera will connect with main/sub stream.
Auto adjust device: The selected camera will adjust the display proportion automatically.
Full display device: The device will display the view base on the split screen size.
Check time device: The time of the camera will sync with PC.
Select one channel and right click, you can see the following screen:

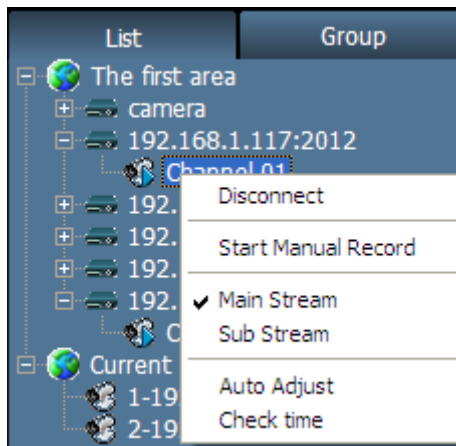


Figure 3.16

You can see a hook before the main stream, that shows the camera is connected with main stream now.

Select one view and right click, you can see the following screen:



Figure 3.17

Full screen: Select it and the client will be full-screen. If you want one view shows full-screen, you need double click the view again. Press ECS and exit the full-screen.

Auto adjust: Select it and the camera will adjust the display proportion automatically.

Photo: Select it and the client will snap a picture.


Record: Select it and the camera will start recording and the default storage path is D disk.

Stop display: Stop displaying the view. After you select it, the status of the camera is connected. If you want to display the view again, you need drag the channel of the camera again.

3.3.2 Group switch

Switch to the group window, if you have set group you can use the group switch button (if you

don't know how to configure group please read Group management.).

Click the switch button , start the group switch and the switch button will change to .

You can click the next/past page to view the group. Click the button  and stop switch.

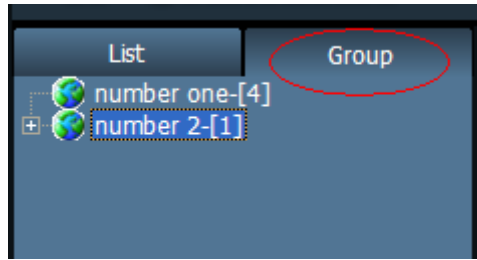


Figure 3.18

Note: You can set the switch time in “Configure---Record management”. The default switch time is 5 seconds.

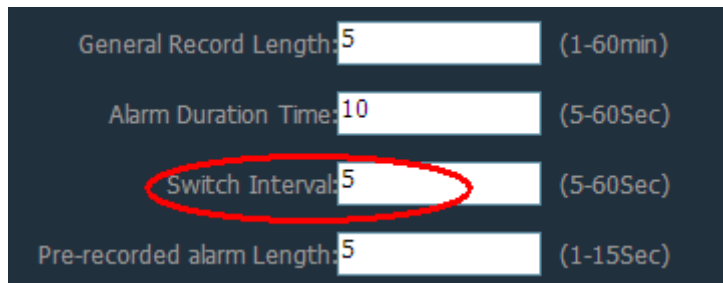


Figure 3.19

3.4 Parameter settings

Adjust the parameters of the connected camera.

You should connect the camera that you want to change the parameters by double click the device channel in parameter settings page. Then you can see the view window.

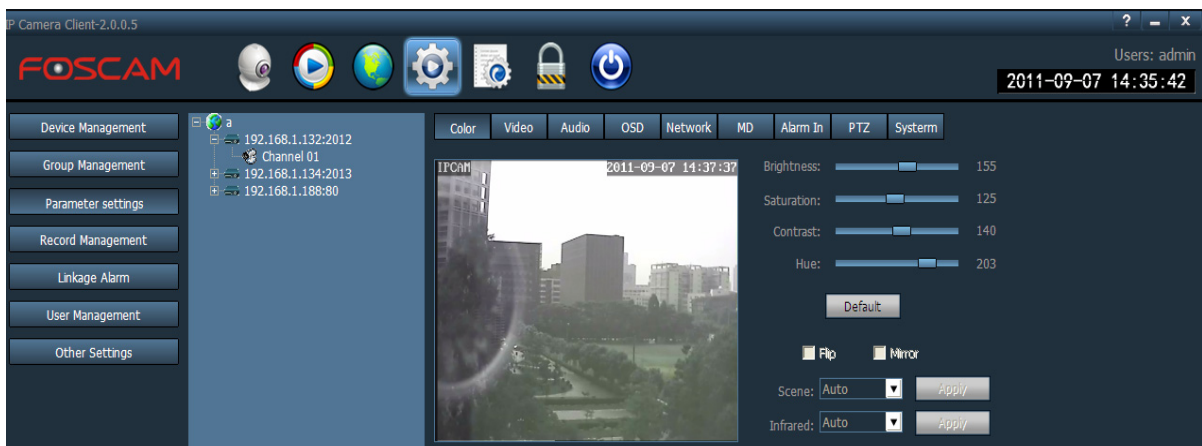


Figure 3.20

3.4.1 Color

Adjust the quality of the video by setting the image parameters.

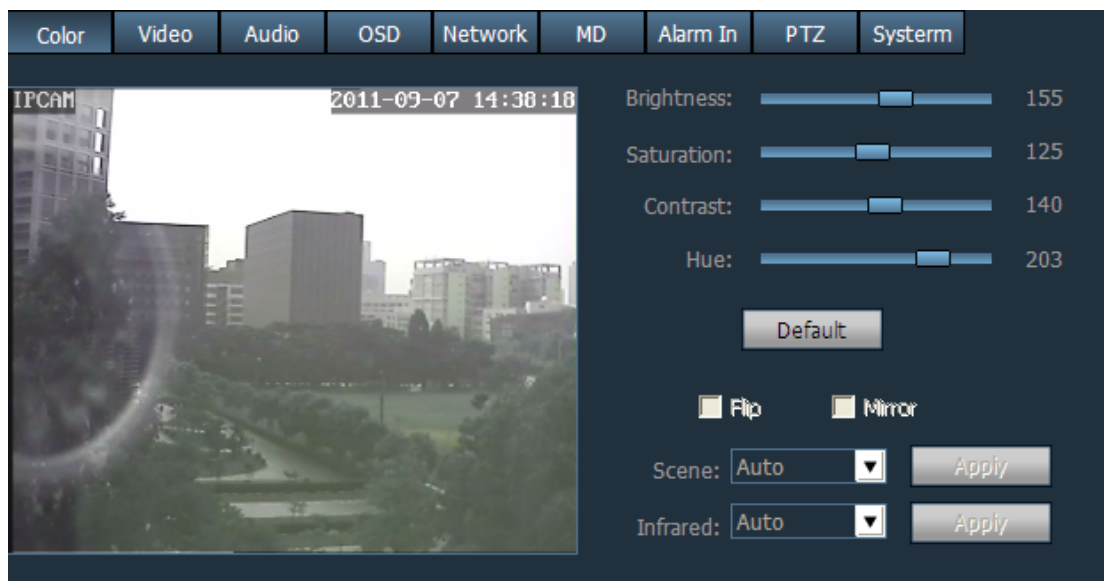


Figure 3.21

Brightness, saturation, contrast and hue will restore the factory default if you click Default.

Flip & Mirror: You can choose flip or mirror if you set up the camera to show a reverse image. Make sure the camera supports the function.

Scene: There are three modes. (Auto, indoor and outdoor). The default mode is auto. Make sure the camera supports the function.

Infrared: There are two modes. (Auto and manual). The default mode is auto. Make sure the camera supports the function.

Note: Make sure the camera supports Flip, Mirror, Scene and Infrared If you want to use these function.

3.4.2 Video

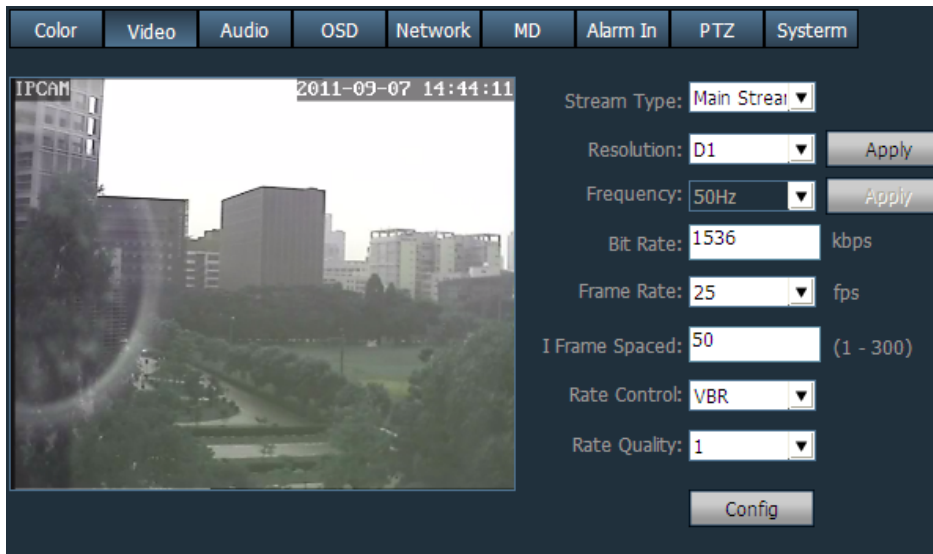


Figure 3.22

Stream Type: There are two types: Main stream and sub stream.

Resolution: Different camera has different resolution.

Frequency: There are two types: 50HZ and 60HZ. The default type is 50HZ.

Bit rate: Generally speaking, the larger the bit rate is, the clearer video will become. But the bit rate configuration should combine well with the network bandwidth. When the bandwidth is very narrow, and bit rate is large, that will lead to video can not play well.

Frame rate: When the camera format is PAL, the maximum frame rate is 25 fps. When the video format is NTSC, the maximum frame rate is 30 fps.

1 Frame spaced: The interval between two frames.

Rate control: It has two models: CBR and VBR. If you choose CVR, video encoder will be coding on the basis of bit rate you set. If you choose VBR, video encoder will be coding not only on the basis of bit rate, but also consider video quality.

Rate quality: It has six grades. The smaller the grade, the better the quality will become.

3.4.3 Audio

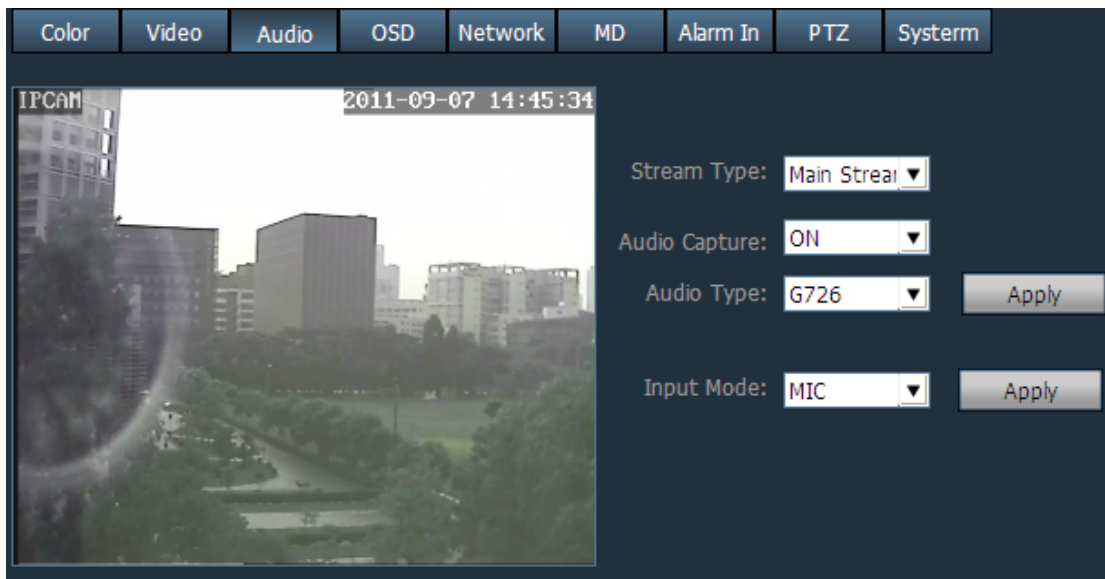


Figure 3.23

Stream type: Main stream or sub stream.

Audio capture: On or off. You had better choose on and the audio will be better.

Audio type: G711, G726.

Input Mode: Mic or line in. If the camera has connected with microphone, here you should choose MIC. If the camera has connected with linear audio input signal device, here you should choose Line in. Which one you choose is decided by the device that connect with camera.

3.4.4 OSD

Add name and time on the video.

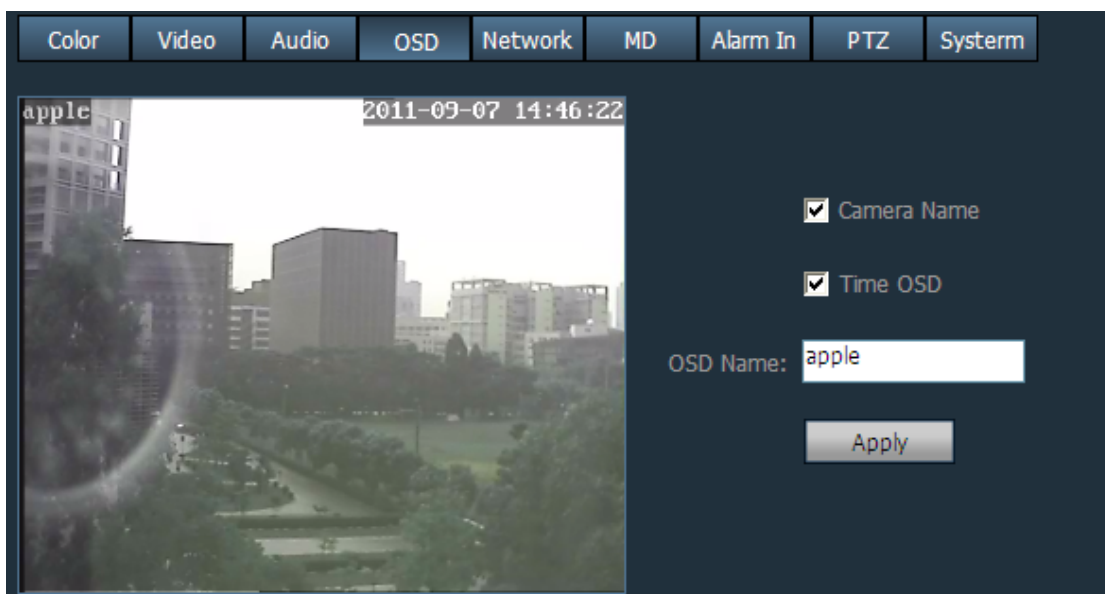


Figure 3.24

Click Apply after finishing all settings.

3.4.5 Network

Configure the network of the camera. Click apply after finishing all settings.

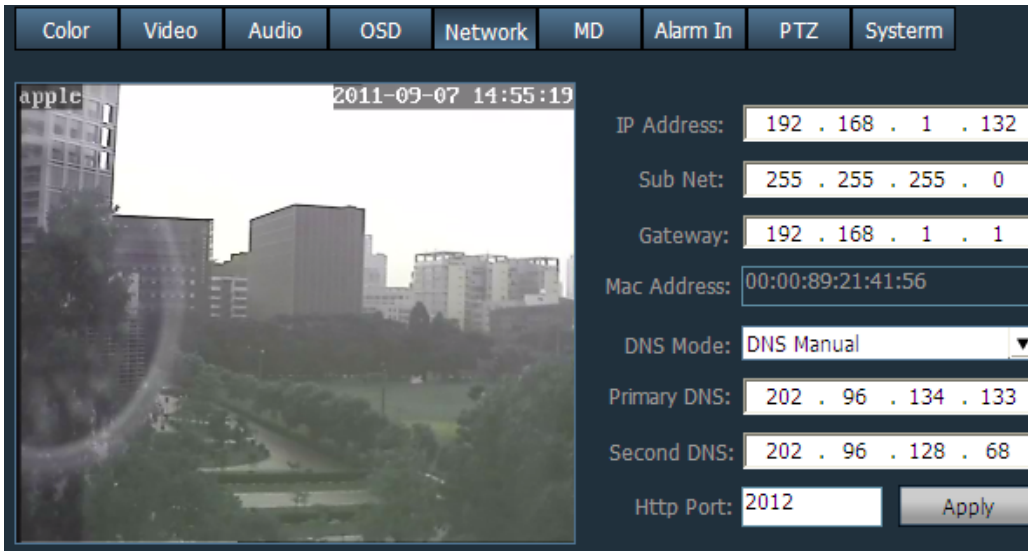


Figure 3.25

3.4.6 MD

If the user wants to monitor a special region, he should select motion detection.

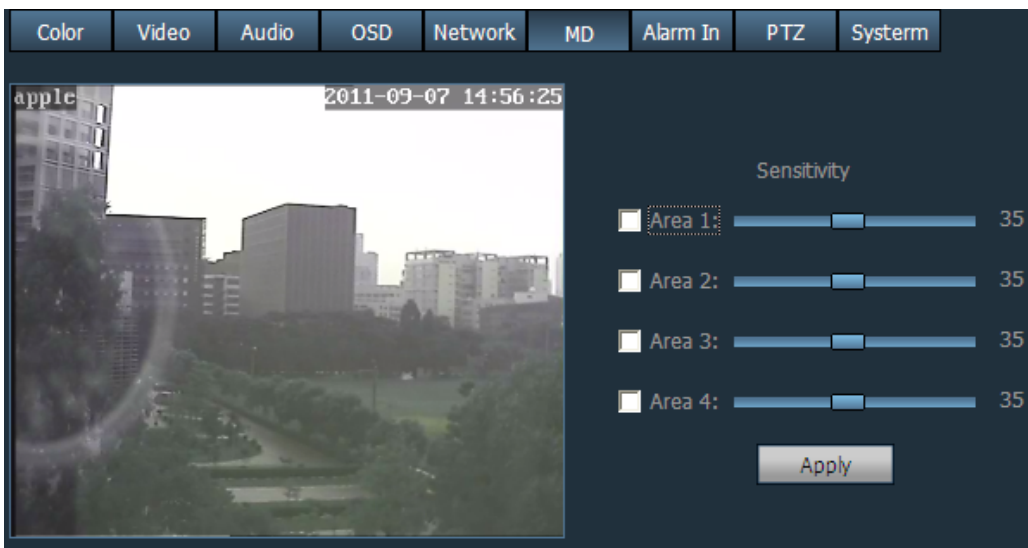


Figure 3.26

Select one window then you can see a green box with a number at living video. You can drag the box to any position that you want to monitor in the video.

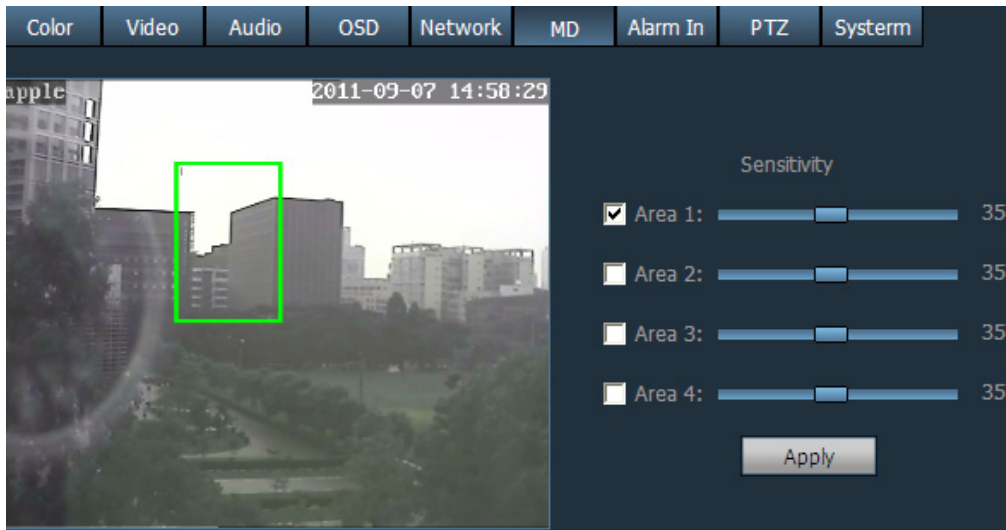


Figure 3.27

Move the mouse to the bottom right corner of the regional box .When the mouse pattern changes to “↘”, you can change the size of the detection area.

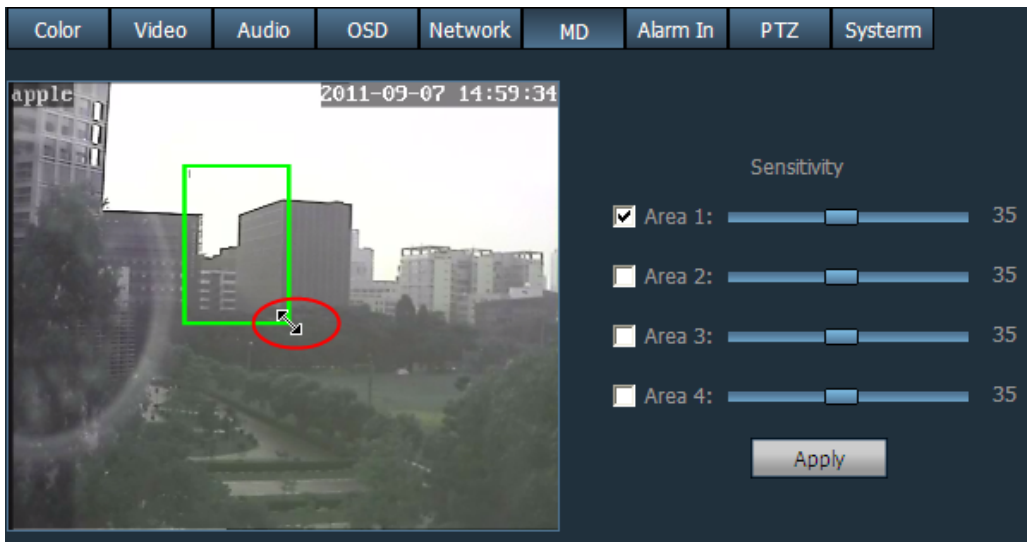


Figure 3.28

Then click apply and you can see a dialog box.

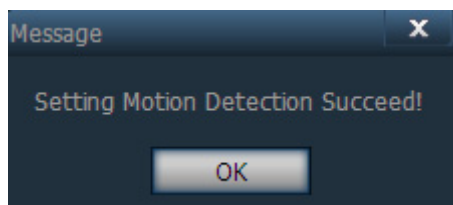


Figure 3.29

You should set alarm type next. Go to”Linkage alarm” and you can see the Alarm type, select Motion Detection.

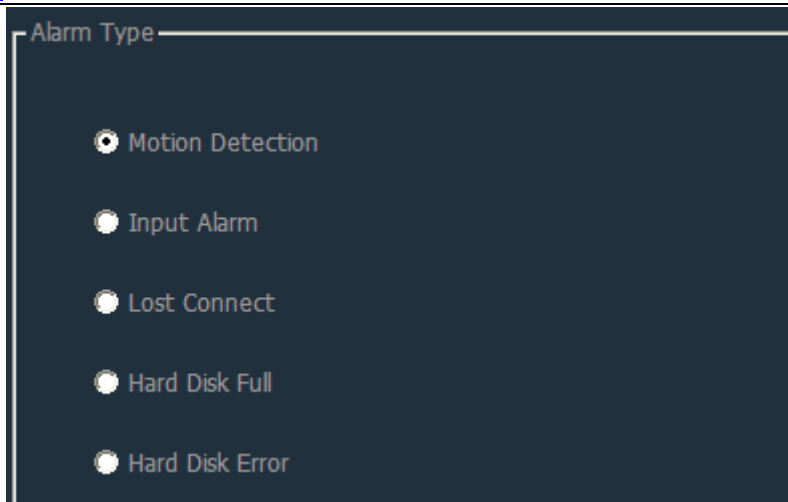


Figure 3.30

Note:1 If you add the date&time to the video,don't put the alarm window on the time area or else the camera will alarm when the time change.

2 If you don't set the motion detection area,the camera will not alarm at any time.

3.4.7 Alarm in

If the camera supports external alarm, you need to configure the option.

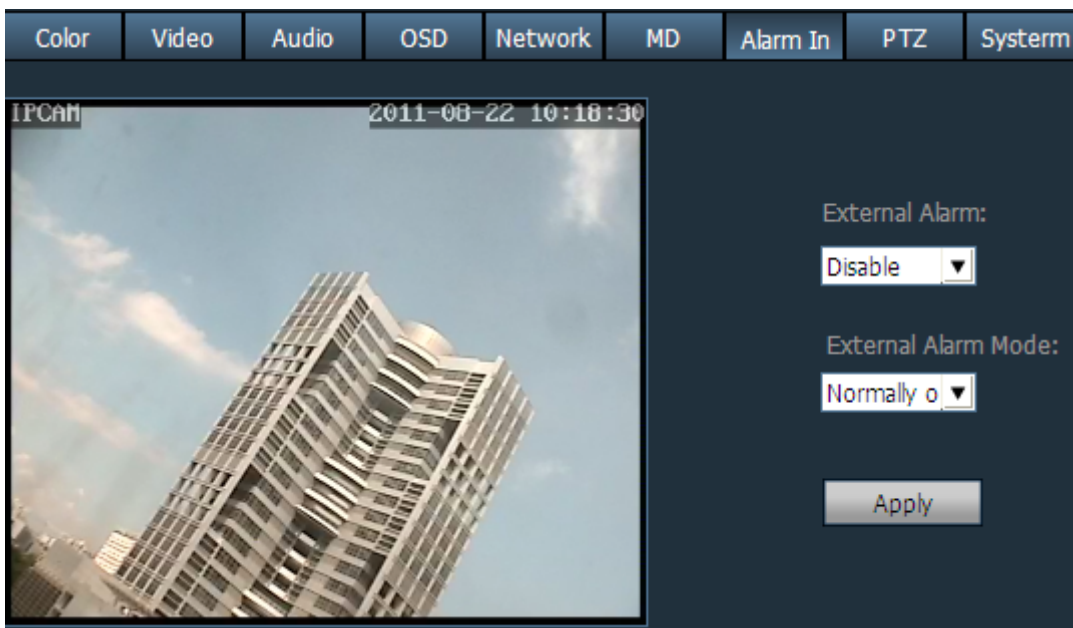


Figure 3.31

3.4.8 PTZ

You can operate the cradle head if you have set the right PTZ params. Make sure the camera has connected with the cradle head. Keep the following params the same as the cradle head

user manual.

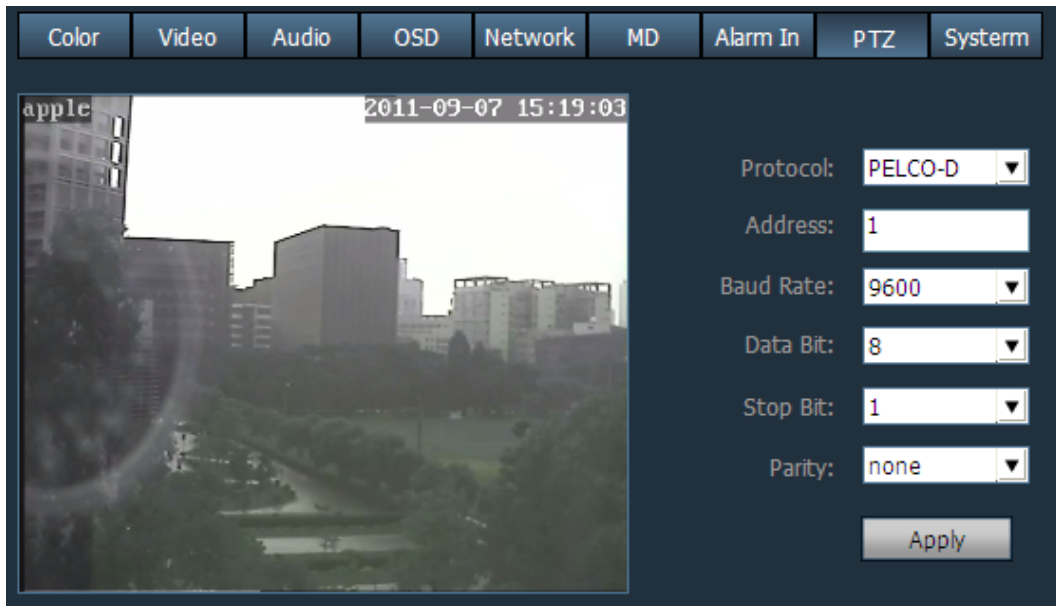


Figure 3.32

3.4.9 System

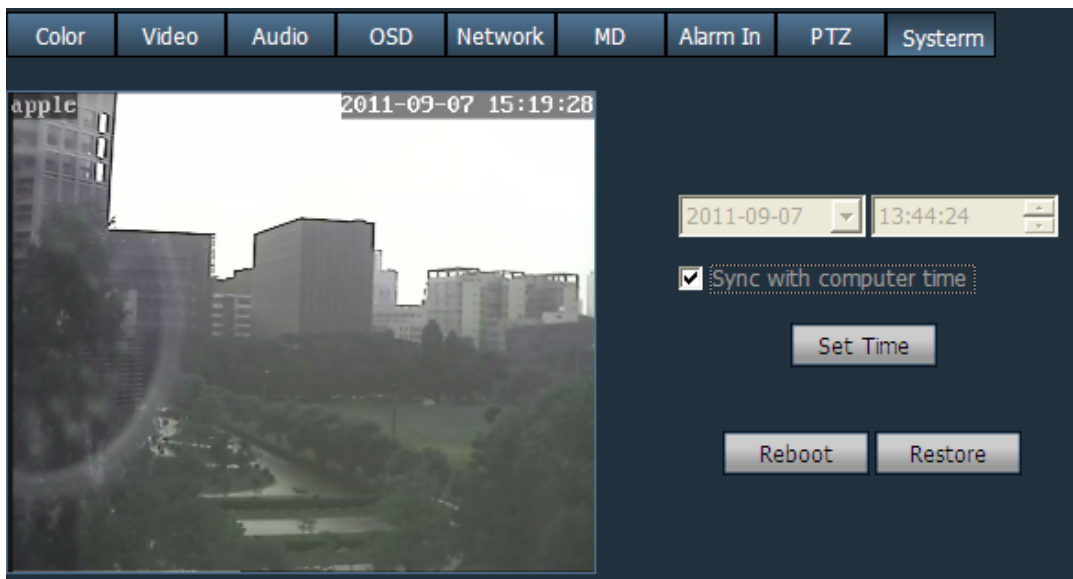


Figure 3.33

Alter the camera time: Adjust the time and date manually or select sync with PC time, then click Set Time.

Reboot: Select it and the camera will reboot.

Restore: Click it and the camera will restore the factory default.

3.5 Record Management

Configure Record Management and the camera you selected will start recording during the time you set.

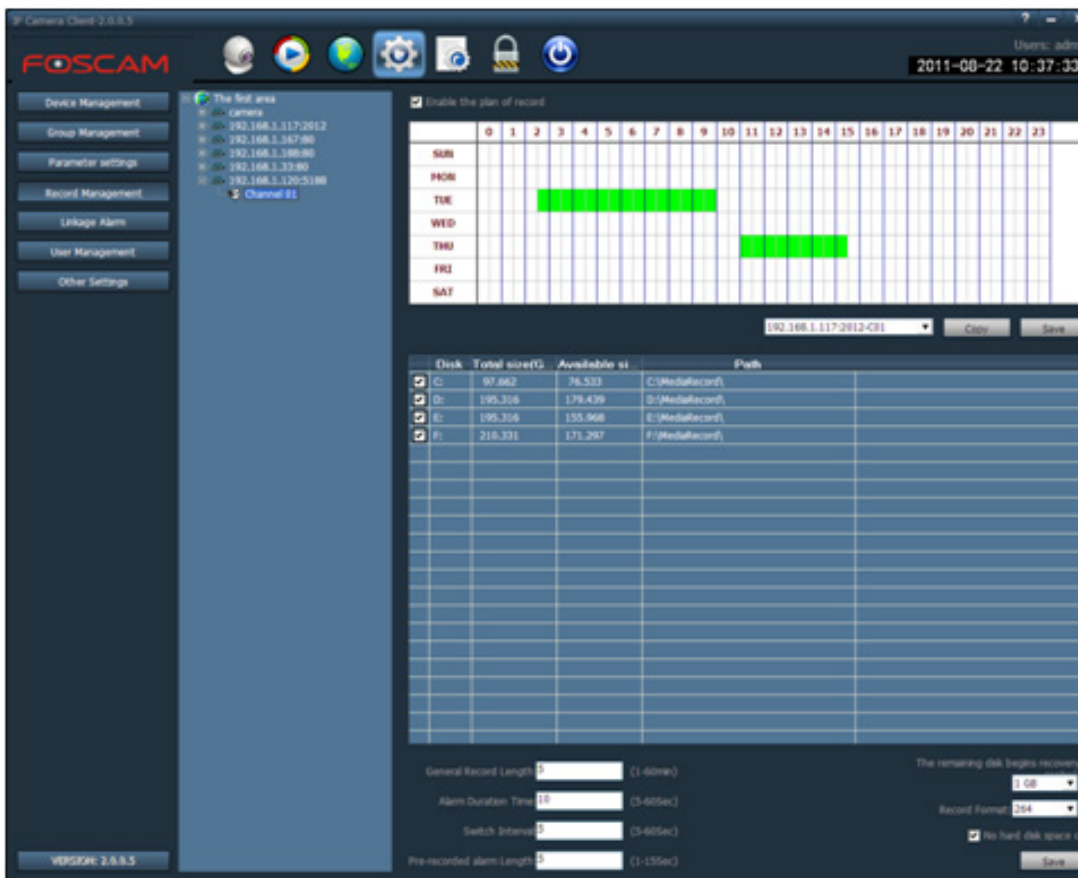


Figure 3.34

First you need enable the plan of record and then select the device channel.

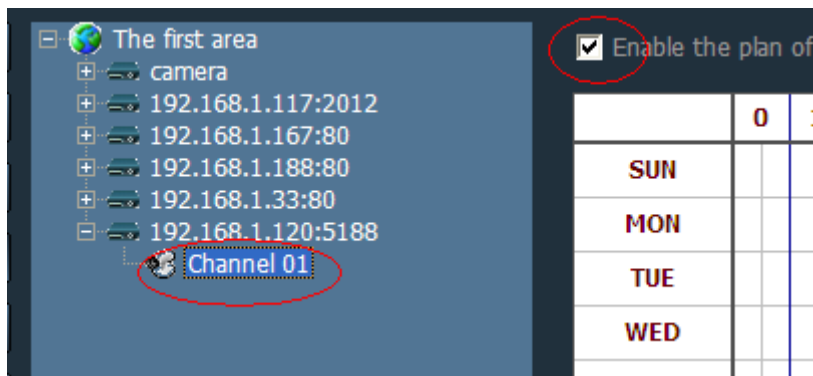


Figure 3.35

Next set the time range for the recording.

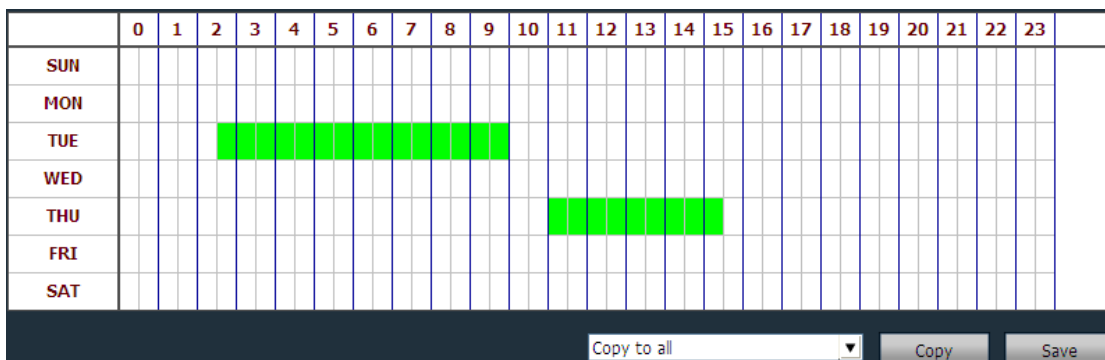


Figure 3.36

Click the mouse and drag it. Then you can see the green record time range. You can cancel the time range by the same way. Click save after finish settings.

Note: If you want all cameras start recording at the same time range, you only need set one time range and select copy, all cameras will record when record time is coming.

Third: Set the record storage path.

	Disk	Total size(G...	Available si...	Path
<input checked="" type="checkbox"/>	C:	97.662	76.533	C:\MediaRecord\
<input checked="" type="checkbox"/>	D:	195.316	179.439	D:\MediaRecord\
<input checked="" type="checkbox"/>	E:	195.316	155.968	E:\MediaRecord\
<input checked="" type="checkbox"/>	F:	210.331	171.297	F:\MediaRecord\

Figure 3.37

If you choose many disks as the storage path, the record file will be stored to the next disk automatically when the current remaining storage space is less than the space you set (the default space is 1G). If you select No hard disk cove", when the total remaining storage space of all disks that you selected is less than the space you set, the new record file will cover the oldest file. (figure 3.38)

You can set 24 storage disks at most.

Finally set the length of the record file

The default length is 5 minutes. You can set the length between 1 and 60 minutes.



Figure 3.38

Click Save after finish all settings.

3.6 Linkage alarm

There are five alarm types: Motion detection, Input alarm, Lost connect, Hard disk full, Hard disk error, select the suitable alarm type for yourself.

You can adopt four ways when alarm happens. There are four types: Popup video window, Electron map alarm, Linkage alarm and Sound alarm. You can select any one for Motion detection and input alarm. But you can only select sound alarm for other alarms.

If you select Electro map alarm, you need configure map firstly.

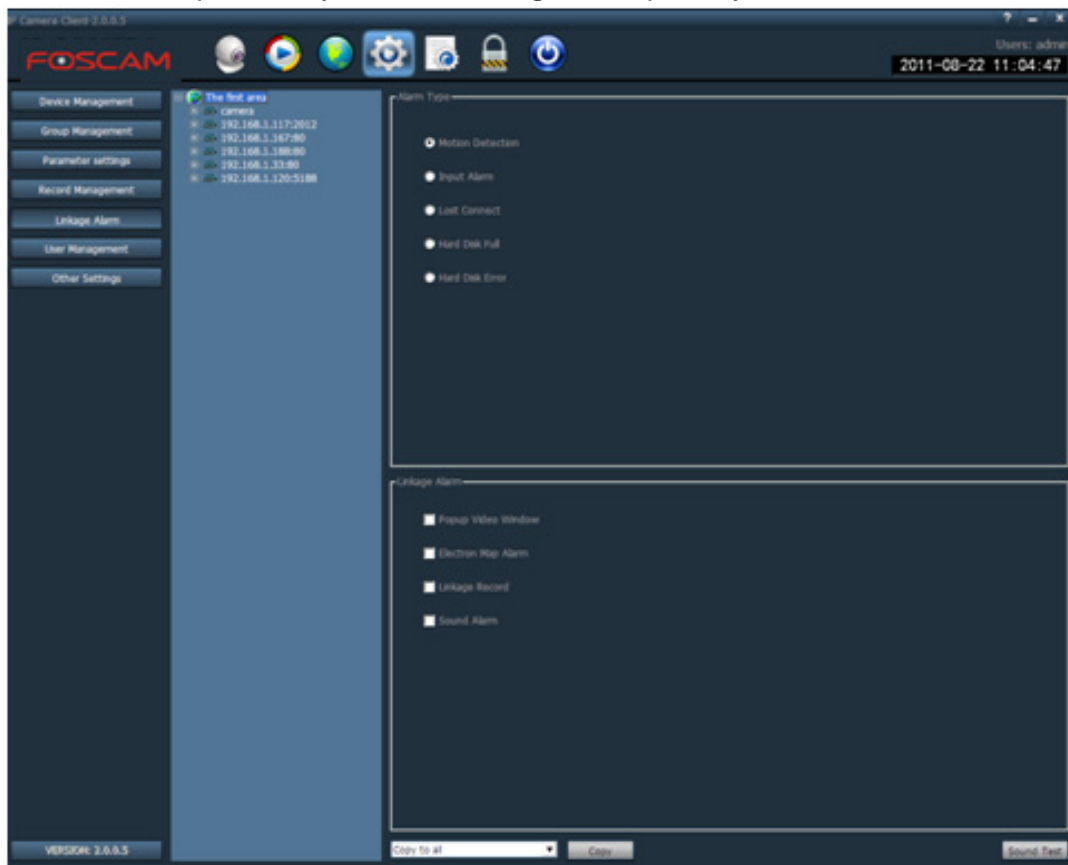


Figure 3.39

You can set alarm duration time, pre-recorded alarm length for one camera at Record Management page.

The default alarm duration time is 10 seconds, you can set it between 5 and 60 seconds.

The default pre-recorded alarm length is 5 seconds, you can set any time between 1 and 15

seconds.

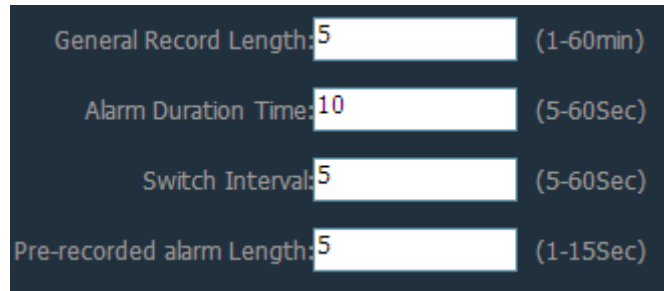




Figure 3.40

- Note: 1 Back to the Preview window, and select the list tree mode, you can see the alarm icon  before the IP address if you set alarm for the camera.
- 2 All linkage alarm will take effect after you set the alarm for the camera.
- 3 When one alarm has happened and another alarm happens again, the duration alarm time will last.
- 4 When the camera is operating the plan of record and during the time the alarm record happens, the client will stop the plan of record and start alarm record.
- 5 When the camera is operating the plan of record or alarm record and the manual record happens, the client will stop the plan of record and alarm record then the manual record starts.(You can start manual record by clicking the button  at the preview page.

3.7 User management

The client has three-lever permissions: admin, user and guest. The admin user has the highest permissions, he can do anything. The guest has the lowest permissions. The default user name is admin, no password. After the administrator logged the client then he can add or alter or delete the other users.

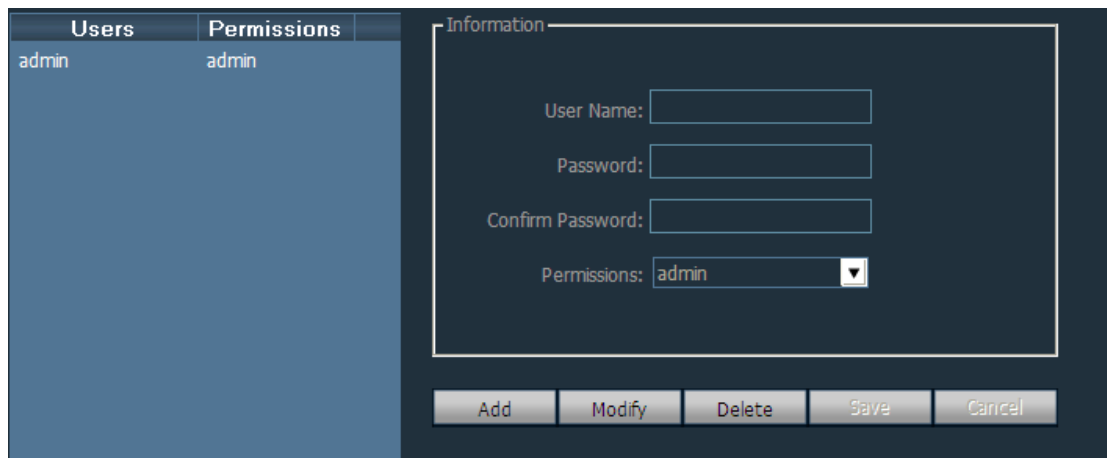


Figure 3.41

Add: Click it and you can see the following screen. Fill in the user name, password and permissions then click Save. You can see the added information.

Information

User Name: test

Password: ****

Confirm Password: ****

Permissions: user

Add Modify Delete Save Cancel

Figure 3.42

Users	Permissions
admin	admin
test	user

Information

User Name: test

Password: ****

Confirm Password: ****

Permissions: user

Add Modify Delete Save Cancel

Figure 3.43

Modify: Select the user by click it at the left of the Information and then you can modify the password and permission.

Users	Permissions
admin	admin
test	user

Information

User Name: test

Password: ****

Confirm Password: ****

Permissions: user

Add Modify Delete Save Cancel

Figure 3.44

Delete: Delete one user.

You can see the user name after one person logged the client, such as the following screen:

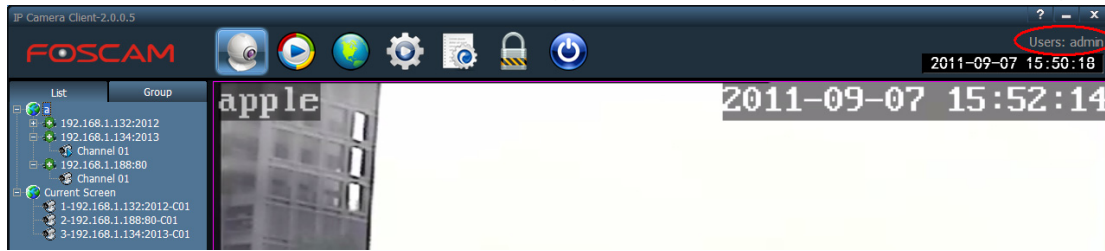


Figure 3.45

3.8 Other settings

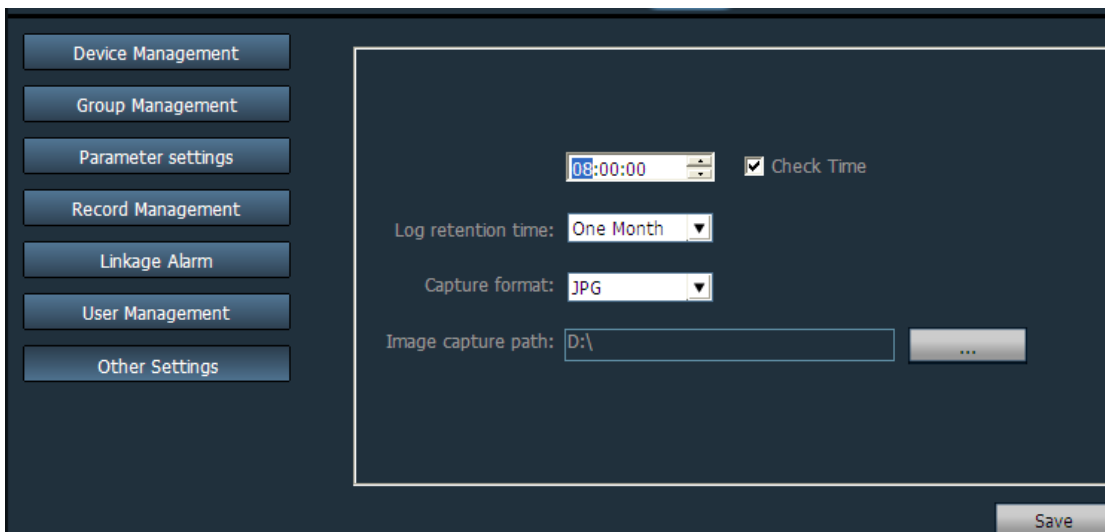


Figure 3.46

Check time: Fill in one time. Select Check time and all cameras that the client connected with will sync with the time.

Log retention time: There are four modes: one month, two months, three months, six months.


Capture format: The picture format of the client captured. There are two modes: JPG and BMP.

Image capture path: The picture storage path of the client captured.

Click Save after finish all settings.

4 Other settings about the client

4.1 Playback

Click the icon  and go to the Playback page.

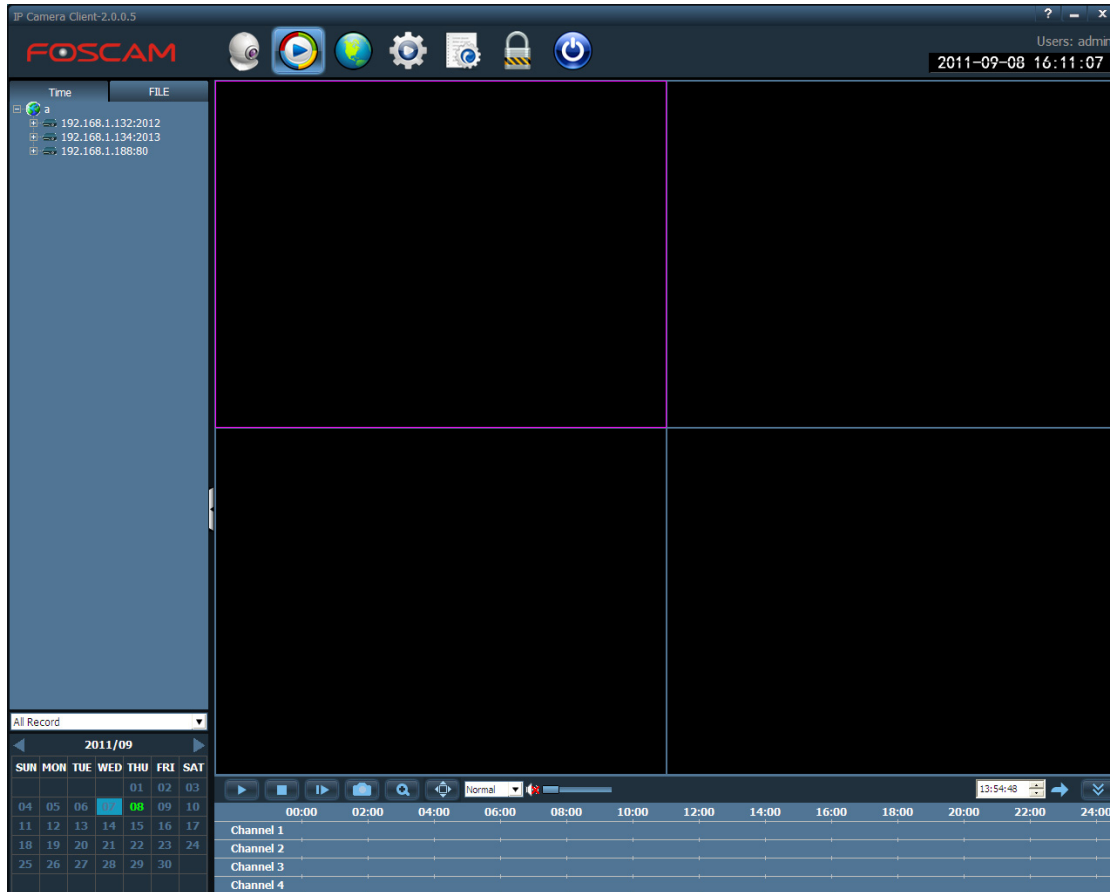



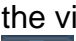




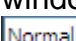



Figure 4.1

- : Play the searched records.
- : Stop playing.
- : Single frame .Click it and the video will play one frame every time. Click the button again, the video will play the next frame.
-  Snap Click the button, the living view will be stored as one picture.
-  Magnifier. Click the button, and then drag the mouse in one view window, the corresponding region will be amplified.
-  Full-screen, Click it and the client window will be full-screen. If you want to make one view window full-screen, you need double click on the view window. Press ESC and exit full-screen.
- : The speed of play.
- : Volume. You can open or close the volume when playback one record.
-  Jump button. Select one time, and click the icon  during the play, the view will jump to the set time and play.

4.1.1 Searching the records by time

You can do as the following steps:

1 Select the record type and searching time.

The record type has four modes: All record, Manual, Alarm and Plan.

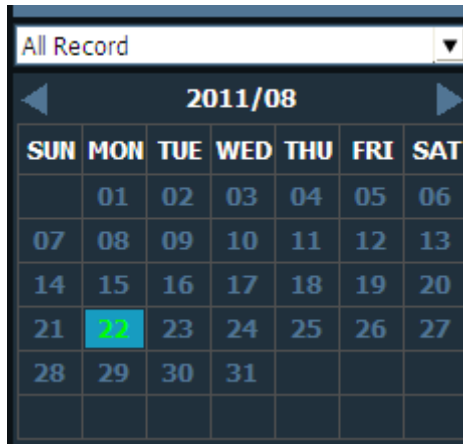


Figure 4.2

2 Select one view window by clicking it. Select one channel by double click it.

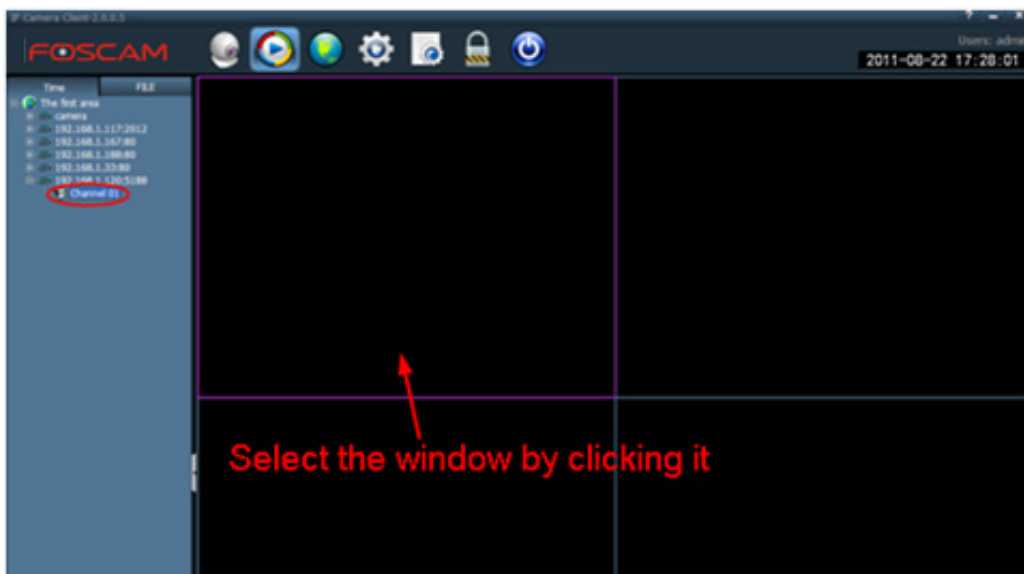
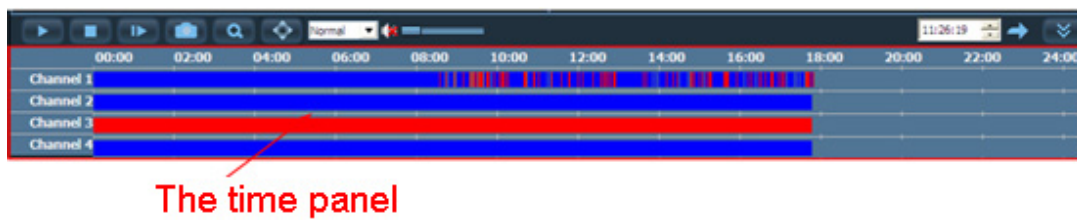


Figure 4.3

3 The time panel will show the records that satisfied the condition.



the plan of record: ■ the alarm record: ■ manual record: ■

Figure 4.4

4 Double click the channel and play the records.

4.1.2 Searching the records by file

Select the file mode first and then search the records.

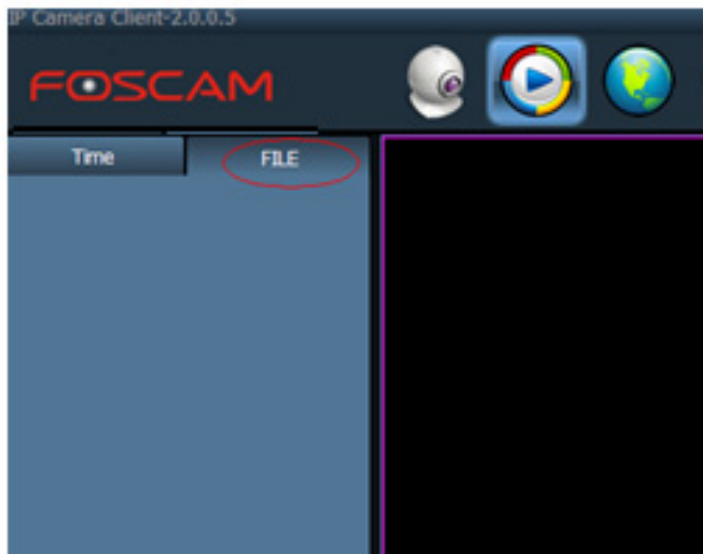


Figure 4.5

You can do as the following steps:

1 Select the file type and channel.

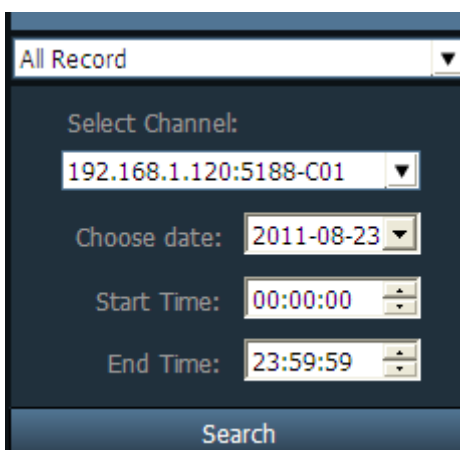


Figure 4.6

2 Fill in the date and time, then click search. You can see some files that matching the search conditions.

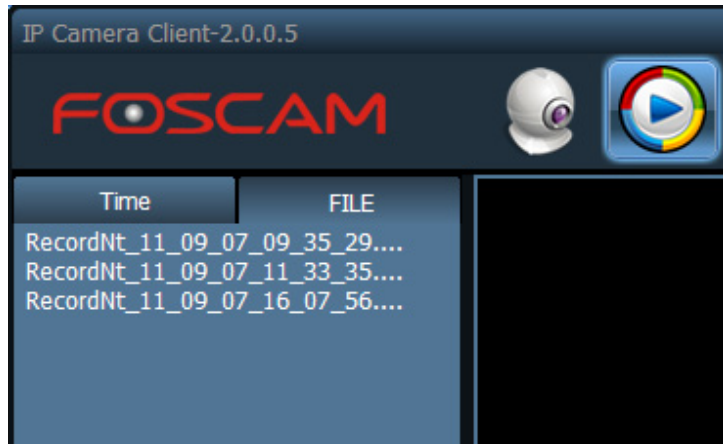


Figure 4.7

3 Choose one window and then double click the file name, the file will play.
Note: You can playback one record file at four windows at the same time.

4.2 EMap

If you want to use the Electron Map Alarm, you need to configure EMap first.

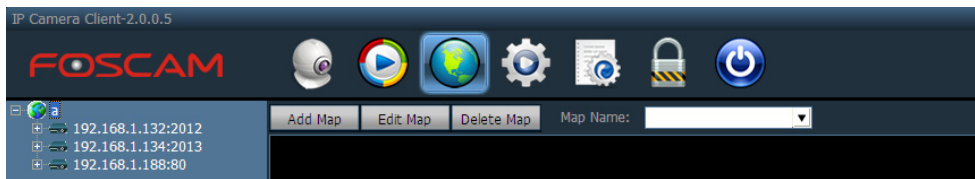


Figure 4.8

4.2.1 Add the map

Click the button "Add map", it will pop up a dialog box.

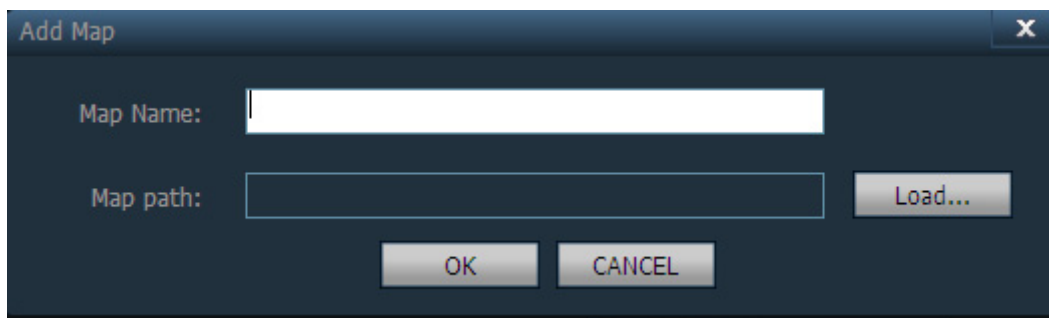


Figure 4.9

Enter the map name and load the map, then click OK. You can see the map at the client. Such as the following picture:

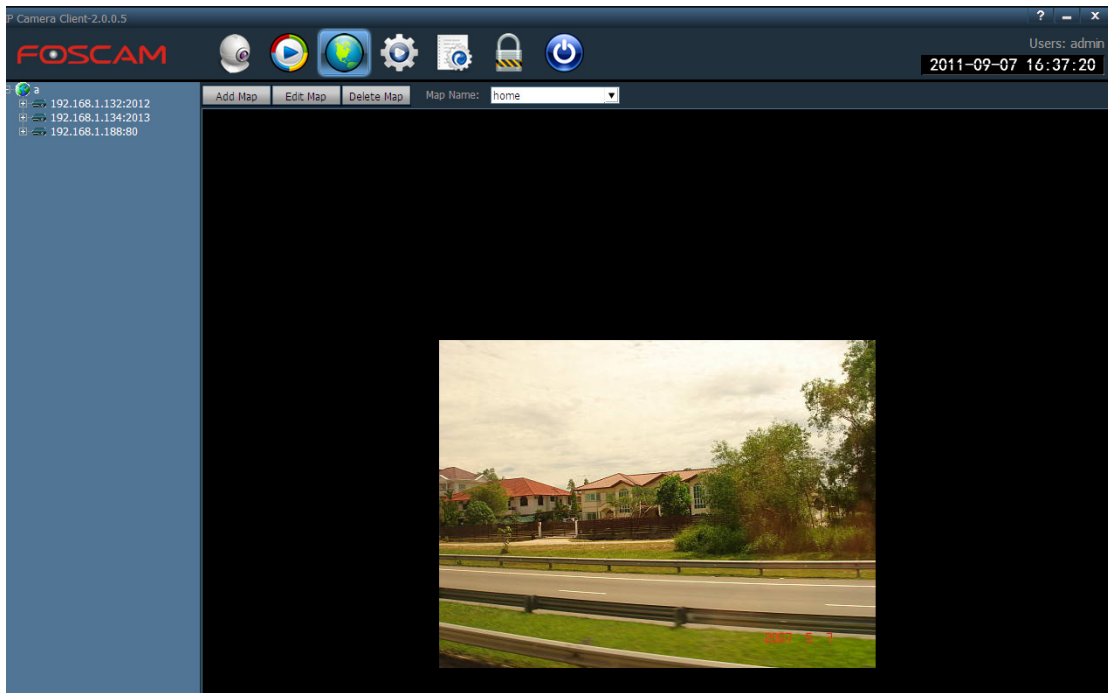




Figure 4.10

4.2.2 Edit the map

Click the button “Edit map” and then drag one device channel to the map. You can see the icon  in the map. Double click the icon , you can see the living view of the device. Click Stop editing after finishing editing.

If you select “Electron Map Alarm” at “Config—Linkage Alarm” page, the icon  will blink when the device alarm.

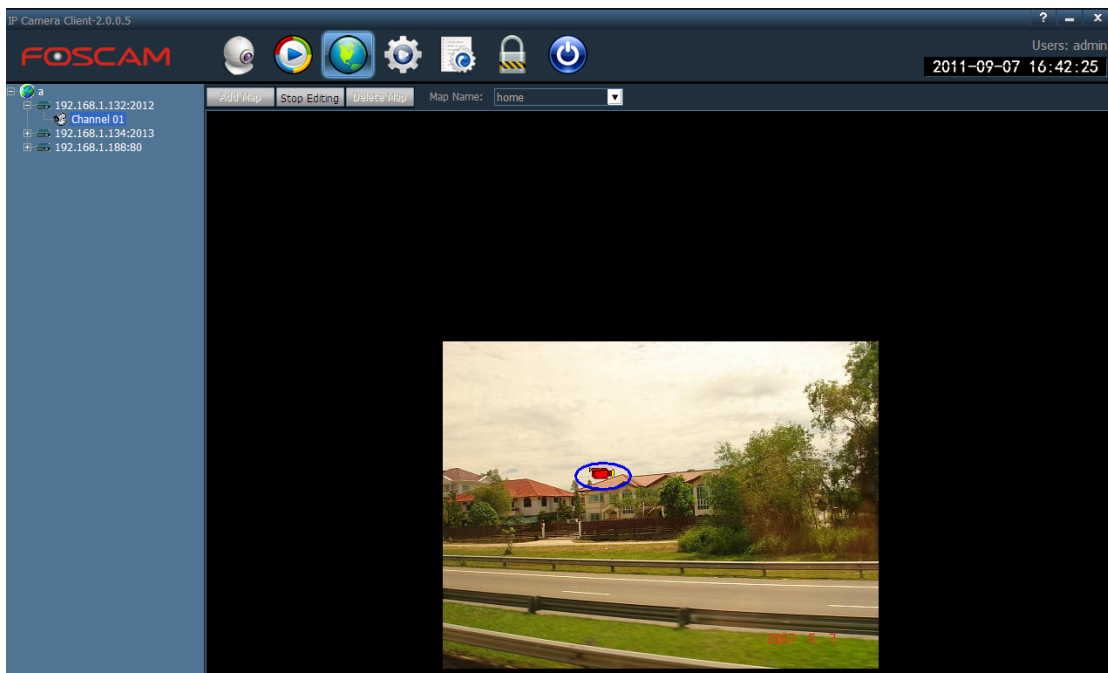



Figure 4.11

Note: You should choose “Electro Map Alarm” in “Config—Linkage Alarm” page, or else when the device alarm, the icon  can not blink.

4.3 Logs

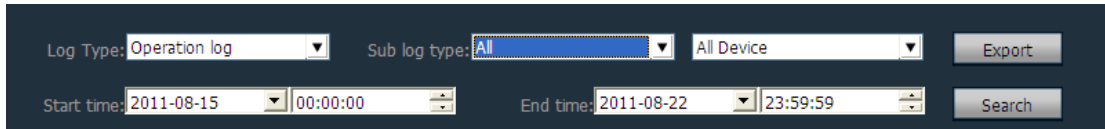


Figure 4.12

There are four kinds of logs: All logs, System log, Operation log and Alarm log.

All logs: All information about the client, such as alarm information and login/exit information, operation information and so on.

System log: Keep track of the login/exit information and other user matching information.

Operation log: Keep track of the operation that users have done.

Alarm log: Keep track of all alarm information.

After you select the main log type, you can choose a detail log type.

Sub log type: There are nine kinds: All, User logs, Connection logs, Recording logs, Capture logs, Talk logs, Listen logs, Group logs and Data logs.

The steps of searching logs:

- 1 Select the Log type and Sub log type.
- 2 Select the searched device.
- 3 Fill the start and end time.
- 4 Click Search

You can see the searching result, such as the following screen:

Source	Time	Users	Content	About
192.168.1.188:80-C1	2011-08-22 09:15:05		Connect Failure!	
192.168.1.188:80-C1	2011-08-22 09:10:22		Connect Failure!	
192.168.1.117:2012-C1	2011-08-20 09:59:08		Connect Success!	
System	2011-08-20 09:36:00		Enter System	
192.168.1.109:80-C1	2011-08-19 15:55:47		Connect Failure!	
192.168.1.109:80-C1	2011-08-19 15:55:32		Connect Failure!	
192.168.1.109:80-C1	2011-08-19 15:55:17		Lost connect	
192.168.1.167:80-C1	2011-08-19 15:41:22		Connect Failure!	
192.168.1.167:80-C1	2011-08-19 15:41:07		Connect Failure!	
192.168.1.167:80-C1	2011-08-19 15:40:52		Connect Failure!	
192.168.1.167:80-C1	2011-08-19 15:40:37		Connect Failure!	
192.168.1.167:80-C1	2011-08-19 15:40:22		Connect Failure!	
192.168.1.167:80-C1	2011-08-19 15:40:07		Lost connect	
192.168.1.88:80-C1	2011-08-19 14:58:19		Connect Failure!	
192.168.1.88:80-C1	2011-08-19 14:58:10		Connect Failure!	
192.168.1.88:80-C1	2011-08-19 14:58:10		Connect Failure!	
192.168.1.167:80-C1	2011-08-19 14:58:00		Connect Success!	
192.168.1.117:2012-C1	2011-08-19 14:57:56		Connect Success!	
192.168.1.109:80-C1	2011-08-19 14:57:50		Connect Success!	
System	2011-08-19 14:26:45		Enter System	
System	2011-08-16 16:04:52		Enter System	

Figure 4.13

If you want to backup the searching result, click Export and set the storage path.

Note: 1 You must search logs first and then backup it.

2 The format of the export logs is .xls

3 Each excel file can save 5000 pieces of logs, if the searching result contains more than 5000, the client will save the other logs to another excel file automatically.

4.4 Logout user

When you leave your PC for a while, you had better logout the client for Illegal intrusion. When you come back, you need enter the password again.

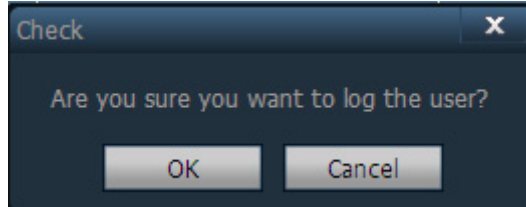


Figure 4.14

4.5 Exit

When you exit the client, you need enter the password again.

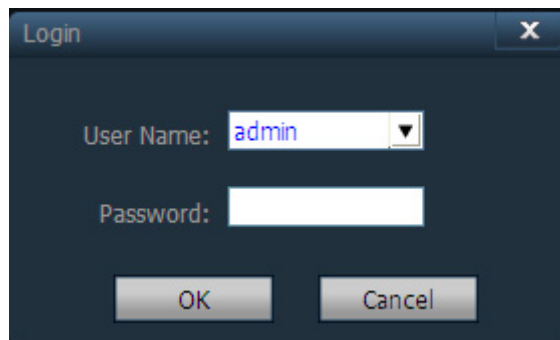


Figure 4.15

Note: Only admin users can exit the client, other users cannot exit it.

5 OBTAINING TECHNICAL SUPPORT

While we hope your experience with the client is enjoyable and easy to use, you may experience some issues or have questions that this User's Guide has not answered. Please contact your reseller and ask for help first, if they could not resolve your issue, please contact our company.